

*“There are always times when those who do science need to pause and reflect ...”*

Sven Treitel

# **Pitfalls and Challenges of Seismic Imaging and Inversion**

*Evgeny Landa*



**Society of Exploration Geophysicists**  
*The international society of applied geophysics*



**Society of Exploration Geophysicists**  
*The international society of applied geophysics*



# OUTLINES

- **Pitfalls in seismic inversion**
- **Quantum seismic imaging: is it possible?**
- **Seismic diffractions - the abandoned stepchildren of traditional imaging**
- **Road ahead**



Society of Exploration Geophysicists  
The international society of applied geophysics

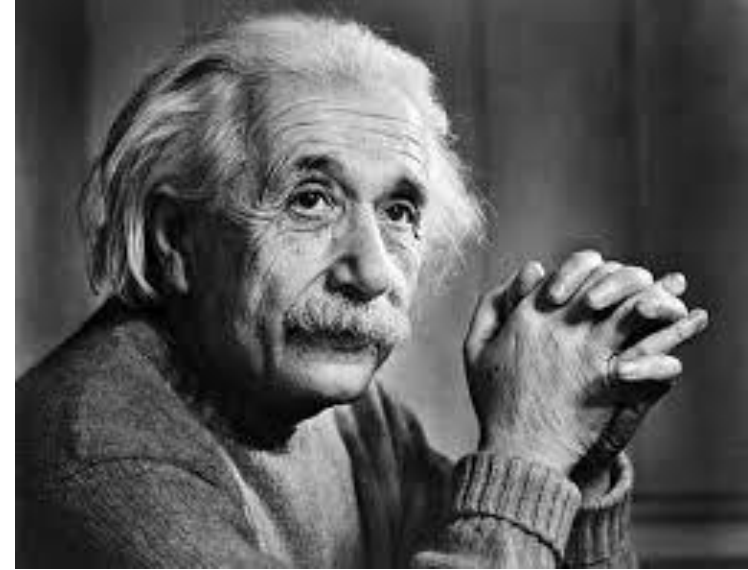
# Inversion: mathematical formulation



Inversion, is a mathematical tool for interpreting *indirect* measurements, inferring properties of the Earth's interior from surface observations.

**Forward problem:**  $Data = Some\_function(Model)$

**Inverse problem:**  $Model = Some\_function^{-1}(Data)$



*How can it be that mathematics, being after all a product of human thought independent of experience, is so admirably appropriate to the objects of reality? ... In my opinion the answer to this question is, briefly, this: As far as the laws of mathematics refer to reality, they are not certain; and as far as they are certain, they do not refer to reality.*

***Albert Einstein***



Society of Exploration Geophysicists  
The international society of applied geophysics

# Inversion - thinking backwards



“Most people, if you describe a train of events to them will tell you what the result will be. There are few people, however that if you told them a result, would be able to evolve from their own inner consciousness what the steps were that led to that result. This power is what I mean when I talk of reasoning backward...”

*Sherlock Holmes,  
Sir Arthur Conan Doyle (1887)*



Society of Exploration Geophysicists  
The international society of applied geophysics

# Inversion: mathematical formulation



Inversion, is a mathematical tool for interpreting *indirect* measurements, inferring properties of the Earth's interior from surface observations.

**Forward problem:**  $Data = Some\_function(Model)$

**Inverse problem:**  $Model = Some\_function^{-1}(Data)$

- The pure mathematical community takes an analytical, “just-solve-the-equation” approach (*not that it is easy!*)
- The second community (geophysicists) focuses on **optimization-based approach**, which *may not* always give as much information as an analytical solution would
- Since stable analytical solutions to inverse problems generally do not exist **optimization is better than nothing**



Society of Exploration Geophysicists  
The international society of applied geophysics

# “Impolite” mathematics



Some problems can behave “impolitely”. Let us consider a linear system of equations:

$$\begin{aligned}x + 10y &= 11 \\10x + 101y &= 111\end{aligned}$$

The unique solution is easy to find:  $x=1$ ;  $y=1$ . Let us slightly change the right hand side of the first equation:

$$\begin{aligned}x + 10y &= 11.1 \\10x + 101y &= 111\end{aligned}$$

Solution now is:  $x = 11.1$ ;  $y = 0$ .

Small change of the input data led to sharp change of the solution.

*What practical value the solution of similar system can have? And the natural first answer - NONE.*

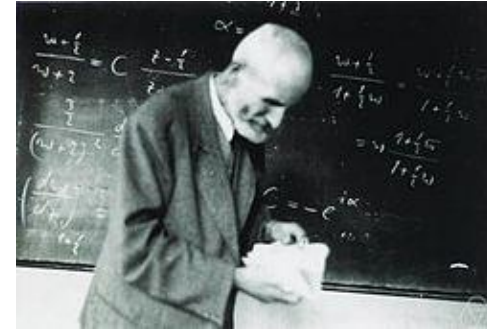


Society of Exploration Geophysicists  
The international society of applied geophysics

# Oscar Perron's paradox



- Suppose the largest natural number is  $N$
- Then, if  $N > 1$  we have  $N^2 > N$  contradicting the definition
- **Hence, the largest natural number is equal to 1!**
- We arrive at this absurd conclusion because we assumed that the largest natural number exists.







Society of Exploration Geophysicists  
The international society of applied geophysics

## Well-posed problems should satisfy the following conditions:



1. *A solution exists*
2. *The solution is unique*
3. *The solution depends continuously on the data*



*(Jacques Hadamard)*

Verification of these conditions is often not a trivial task because the solutions obtained may not be a priori as absurd as in Perron's paradox. An apparently reasonable result can mistakenly create an illusion that the problem is solved.



Society of Exploration Geophysicists  
*The international society of applied geophysics*

# Geophysical inversion



## What doesn't it mean?

- **Inversion  $\neq$  Data fitting**

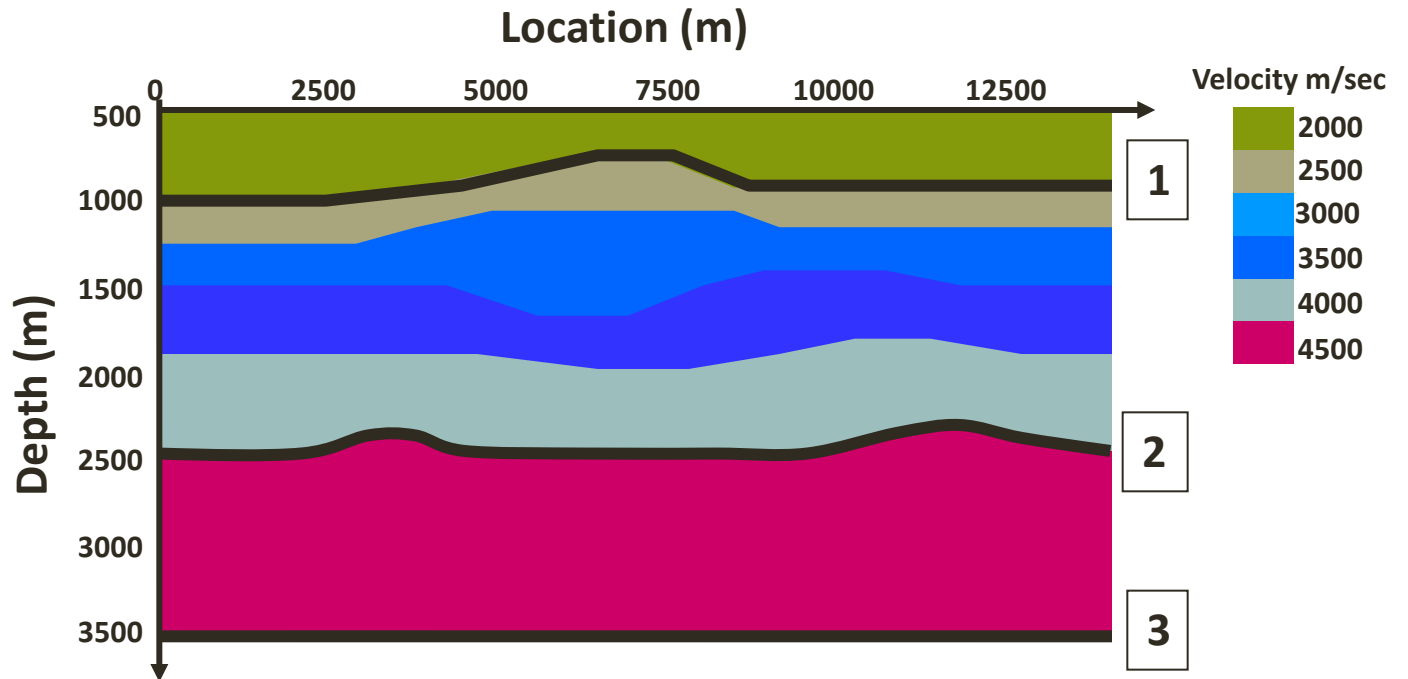
“... a good fit is a necessary but by no means sufficient condition for success. By itself, a good fit does not guarantee that an inversion is correct. This occurs, in my opinion, more often than we would like to think”.

Sven Treitel



# Non-uniqueness of the inverse kinematic problem

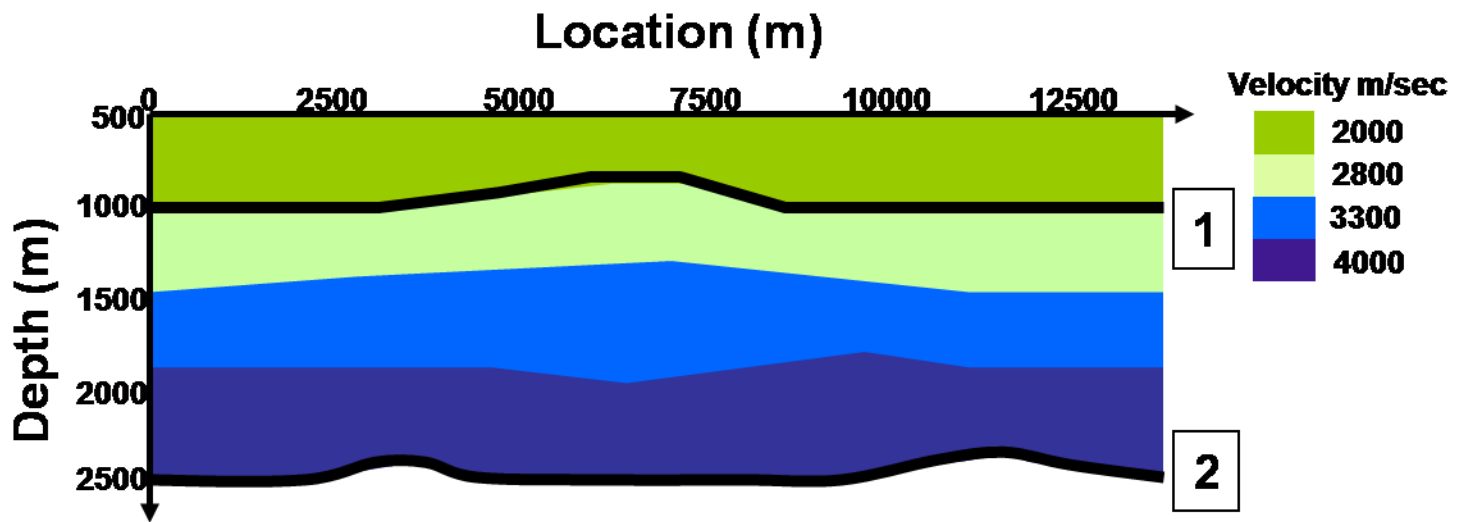
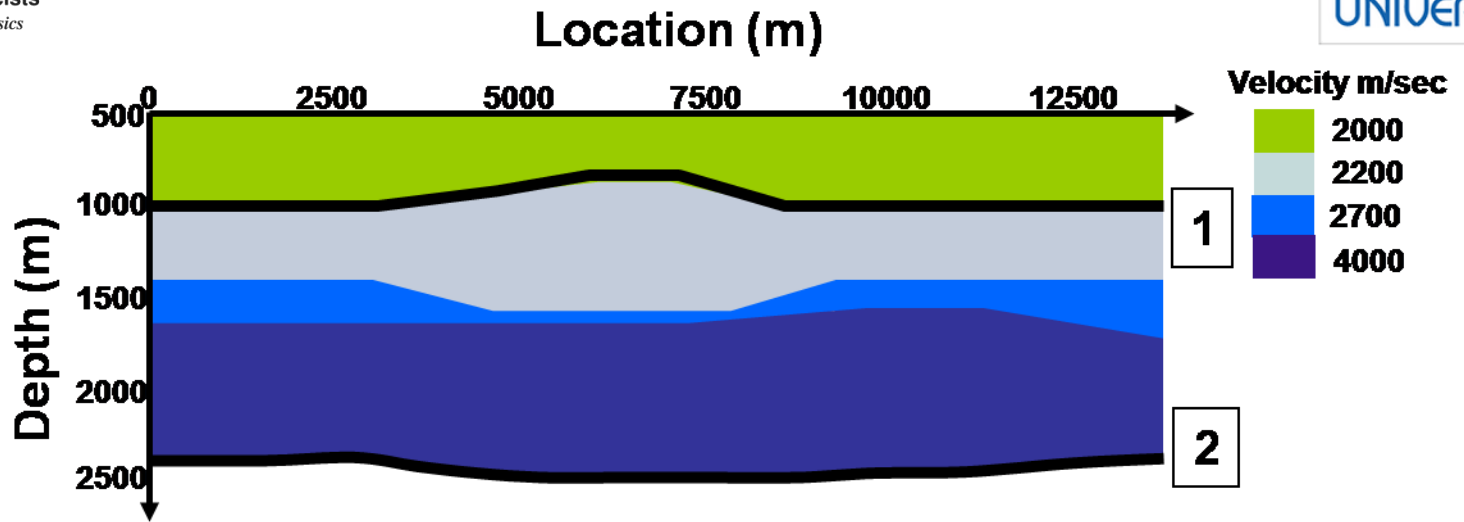
## Three layer model





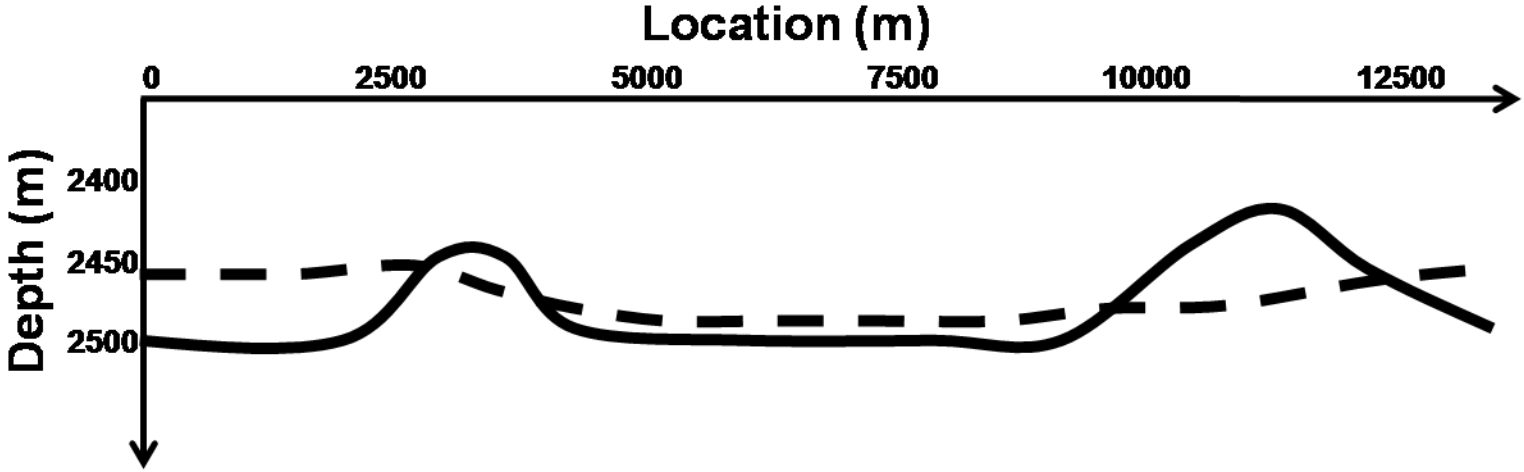
Society of Exploration Geophysicists  
The international society of applied geophysics

# Two kinematically equivalent models





### Difference between two models (zoom)



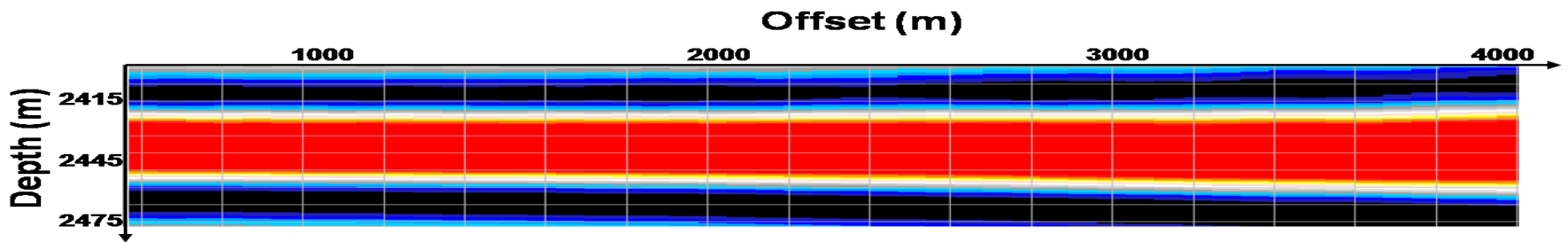
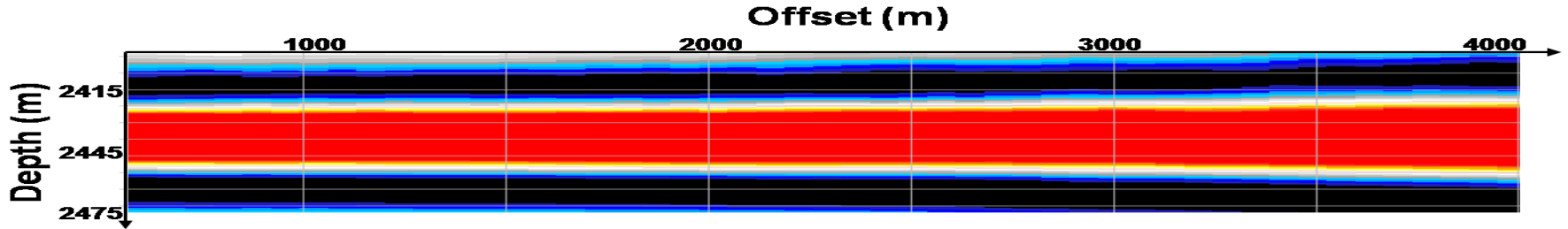


Society of Exploration Geophysicists  
The international society of applied geophysics



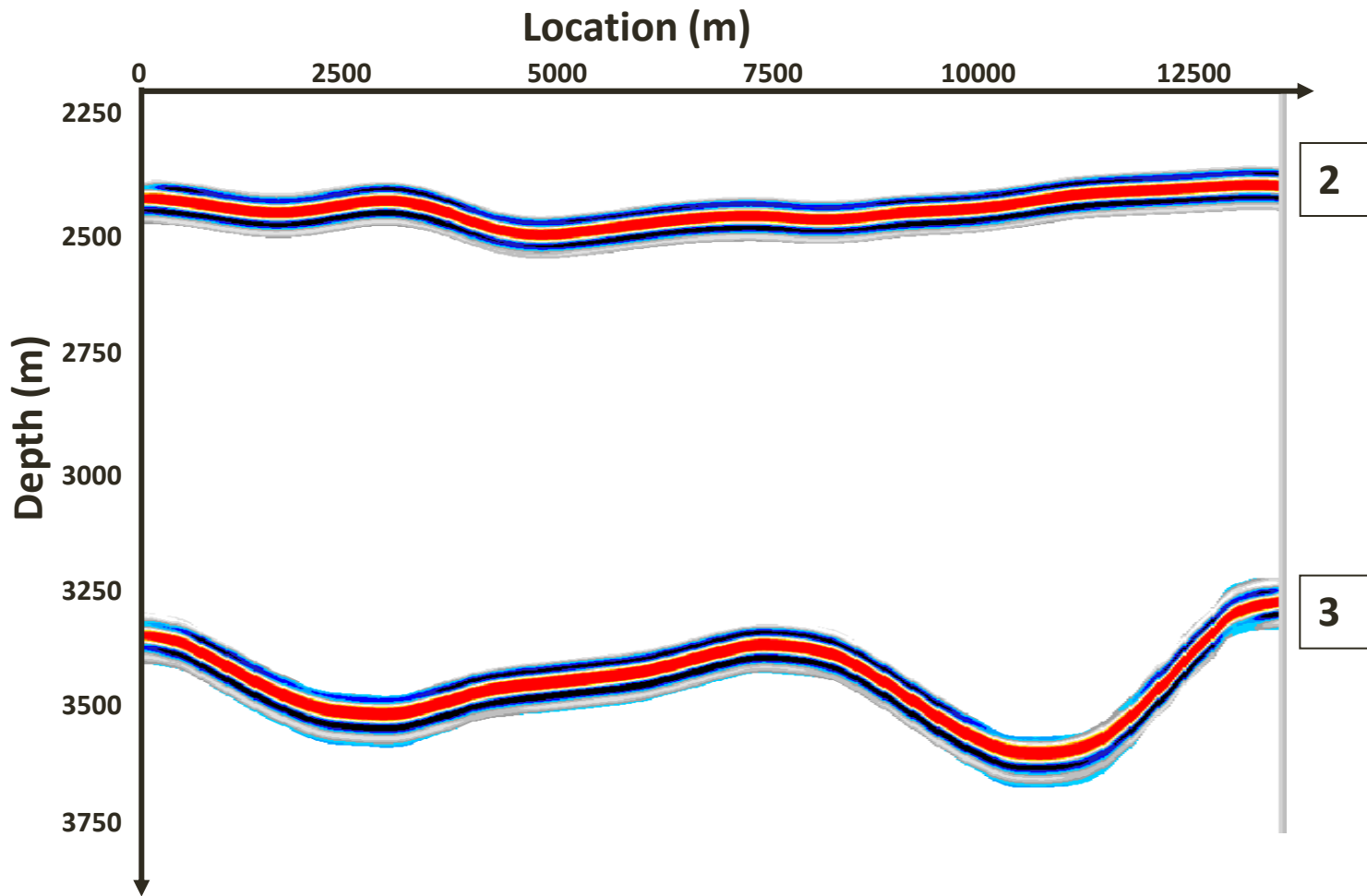
# May be depth migration can help?

## CIGs for two models





# PSDM (model II)

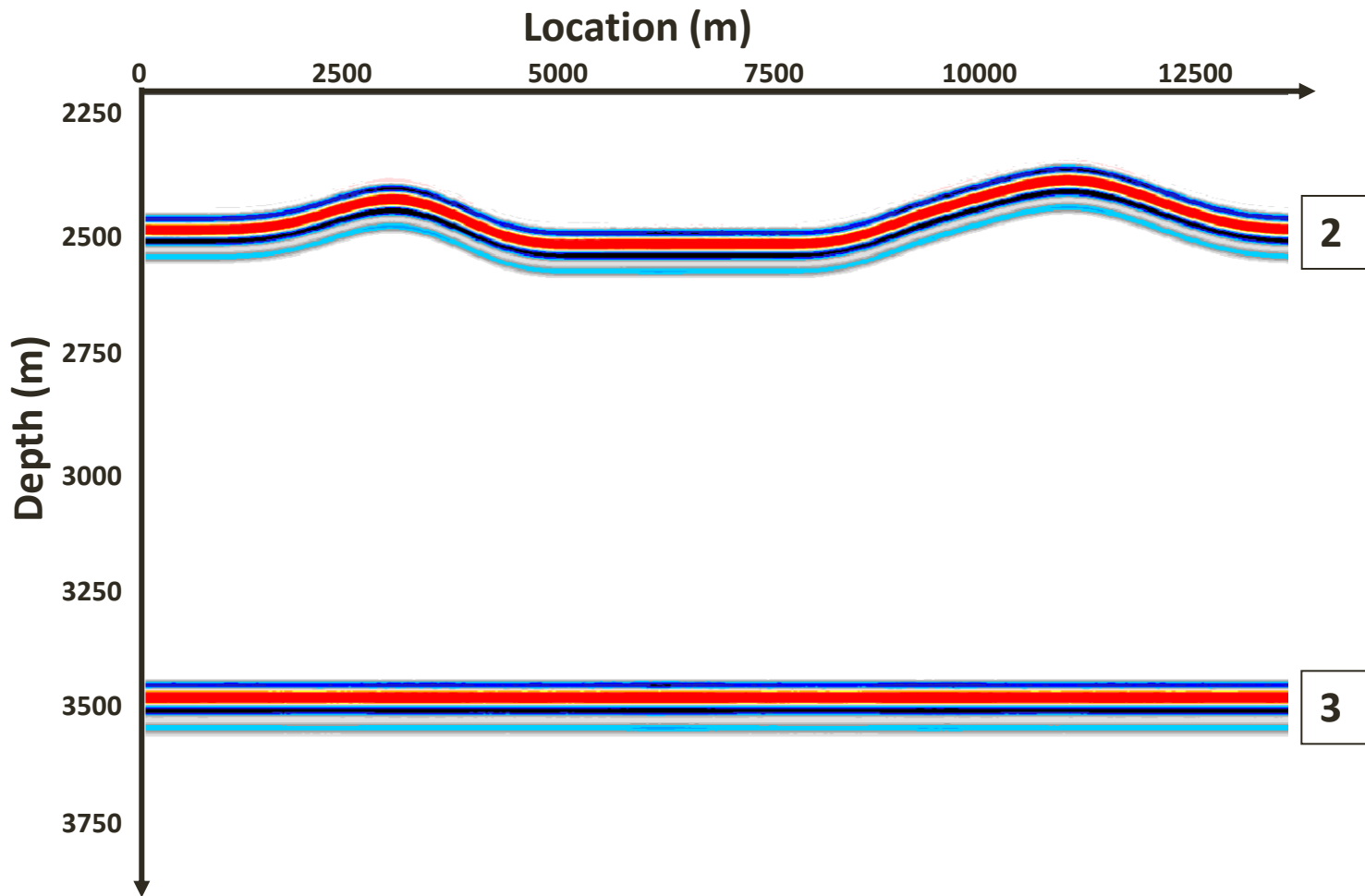




Society of Exploration Geophysicists  
*The international society of applied geophysics*



## PSDM (model I)







Society of Exploration Geophysicists  
*The international society of applied geophysics*

# Geophysical inversion



## What does it mean?

- How much the solution allows for reconstruction of important characteristic of the subsurface
- At the same time the importance of these characteristics is a factor external to the inversion problem...



Society of Exploration Geophysicists  
*The international society of applied geophysics*

## Few lessons



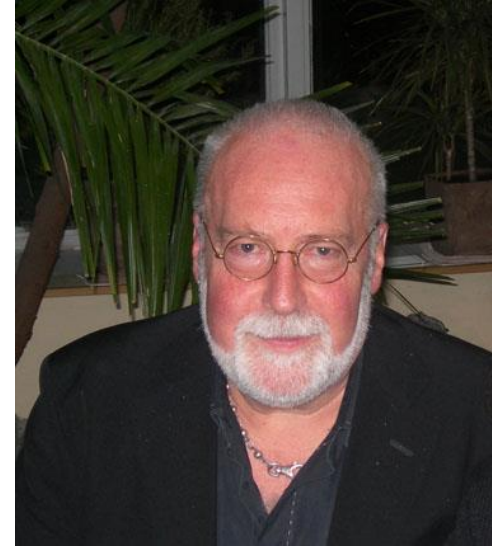
- Inversion based on the best fit of observed and calculated data may lead to construction of several subsurface models with significantly different geological meaning
- An overburden model constructed by the best fit does not guarantee a correct solution for the deeper part of the model
- Refinement of the model parameterization may lead to a better fit but does not guarantee construction of a better subsurface model
- The question we should always keep in mind is “How correct and realistic is our seismic images” rather than the question “How well does it fit my data”



## *And what about FWI?*

Society of Exploration Geophysicists  
The international society of applied geophysics

**Tarantola** took the view that the most general formulation of inverse problems can be obtained by using the language of probability and the **Bayesian approach**:



- Bayesian approach requests *knowledge of the statistical properties of the model* as well as *the statistical properties of the data*
- According to the Bayesian approach, ***the data is used in inversion to constrain the a priori model***, and not the opposite as when ***the inversion is constructed from the data*** and the a priori model serves as a constraint.
- In practice our knowledge of statistical properties and a priori information are very poor: ***“It is difficult to use Bayes’ theorem in seismic inversion and to be honest”***
- Our solutions are limited by the well known least squares method, assuming Gaussian distribution of noise



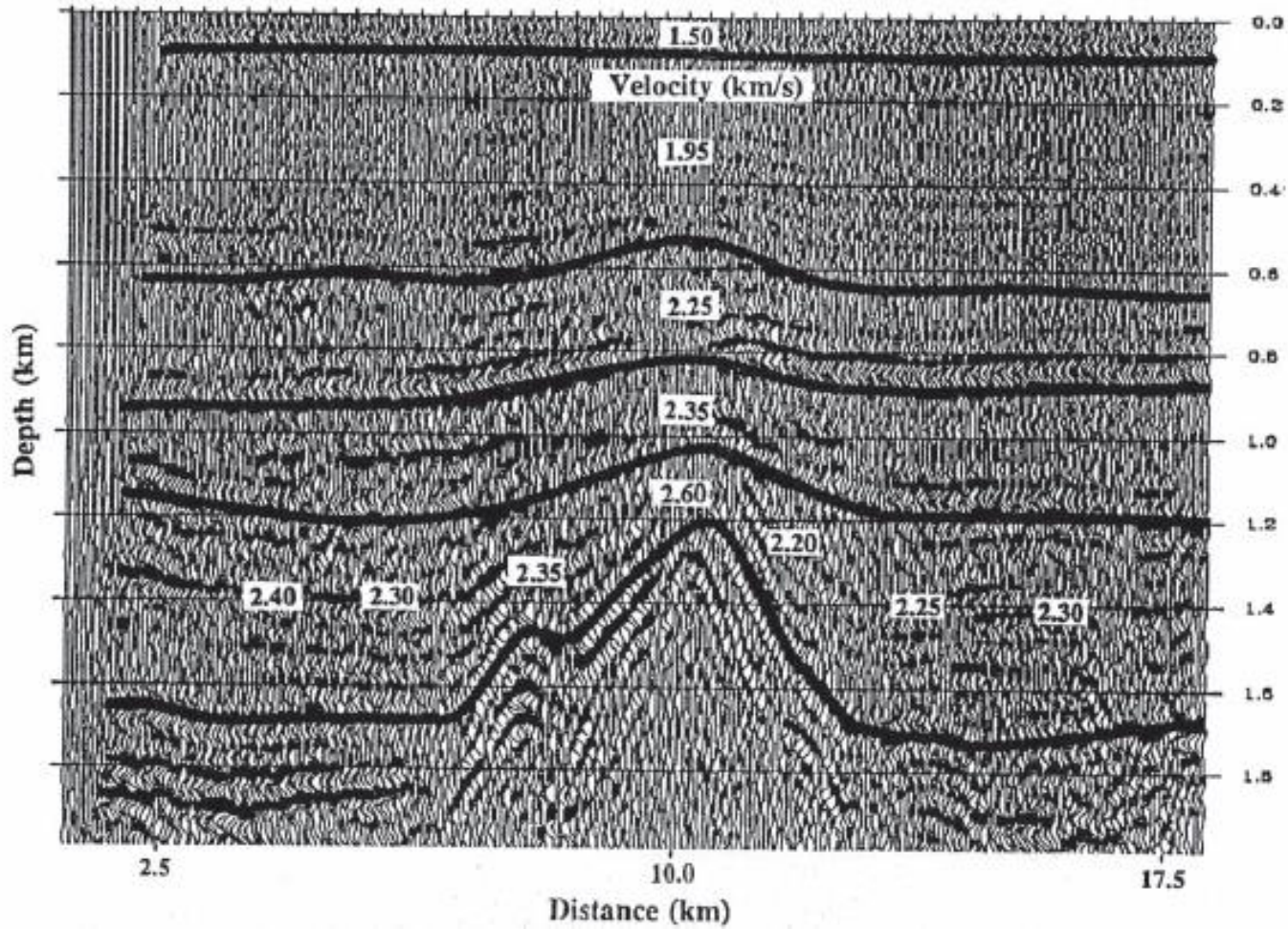
Society of Exploration Geophysicists  
*The international society of applied geophysics*



JOURNAL OF GEOPHYSICAL RESEARCH, VOL. 96, NO. B12, PAGES 20,289–20,299, NOVEMBER 10, 1991

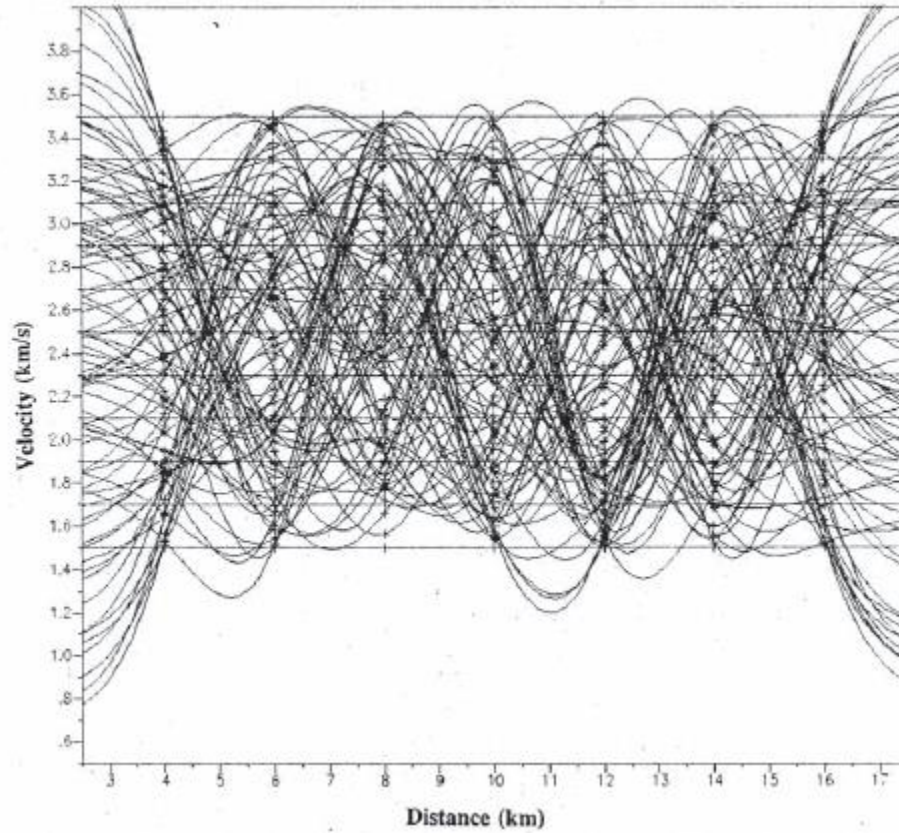
## Monte Carlo Estimation and Resolution Analysis of Seismic Background Velocities

ZVI KOREN,<sup>1,2</sup> KLAUS MOSEGAARD,<sup>3</sup> EVGENY LANDA,<sup>4</sup> PIERRE THORE<sup>4</sup>  
AND ALBERT TARANTOLA<sup>5</sup>



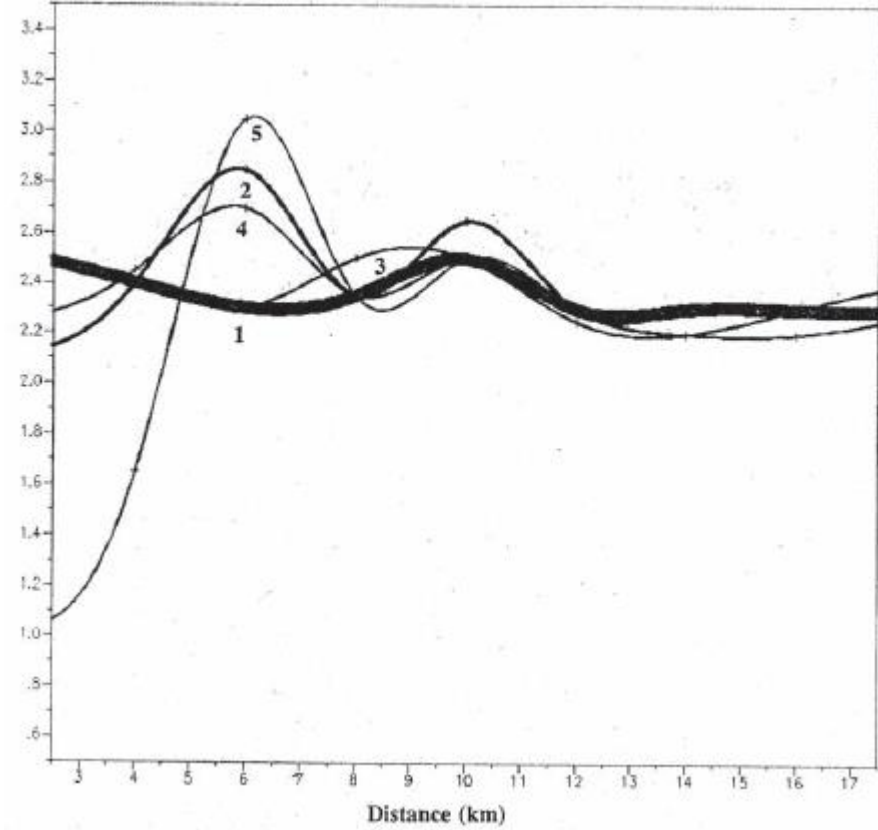
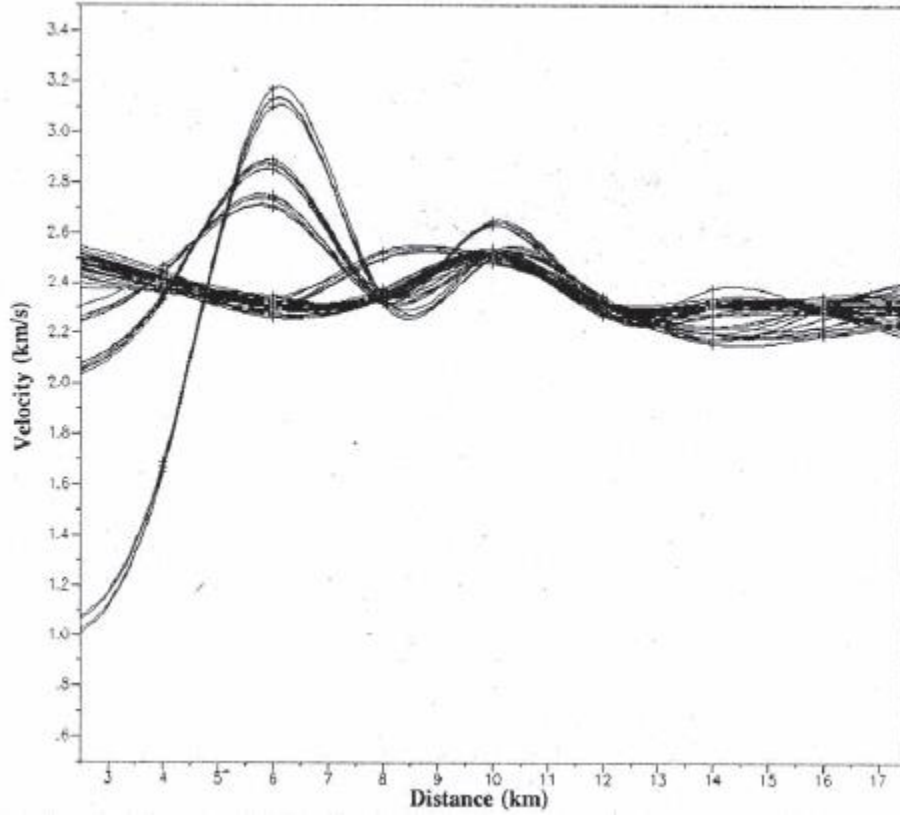


Society of Exploration Geophysicists  
*The international society of applied geophysics*





Society of Exploration Geophysicists  
The international society of applied geophysics



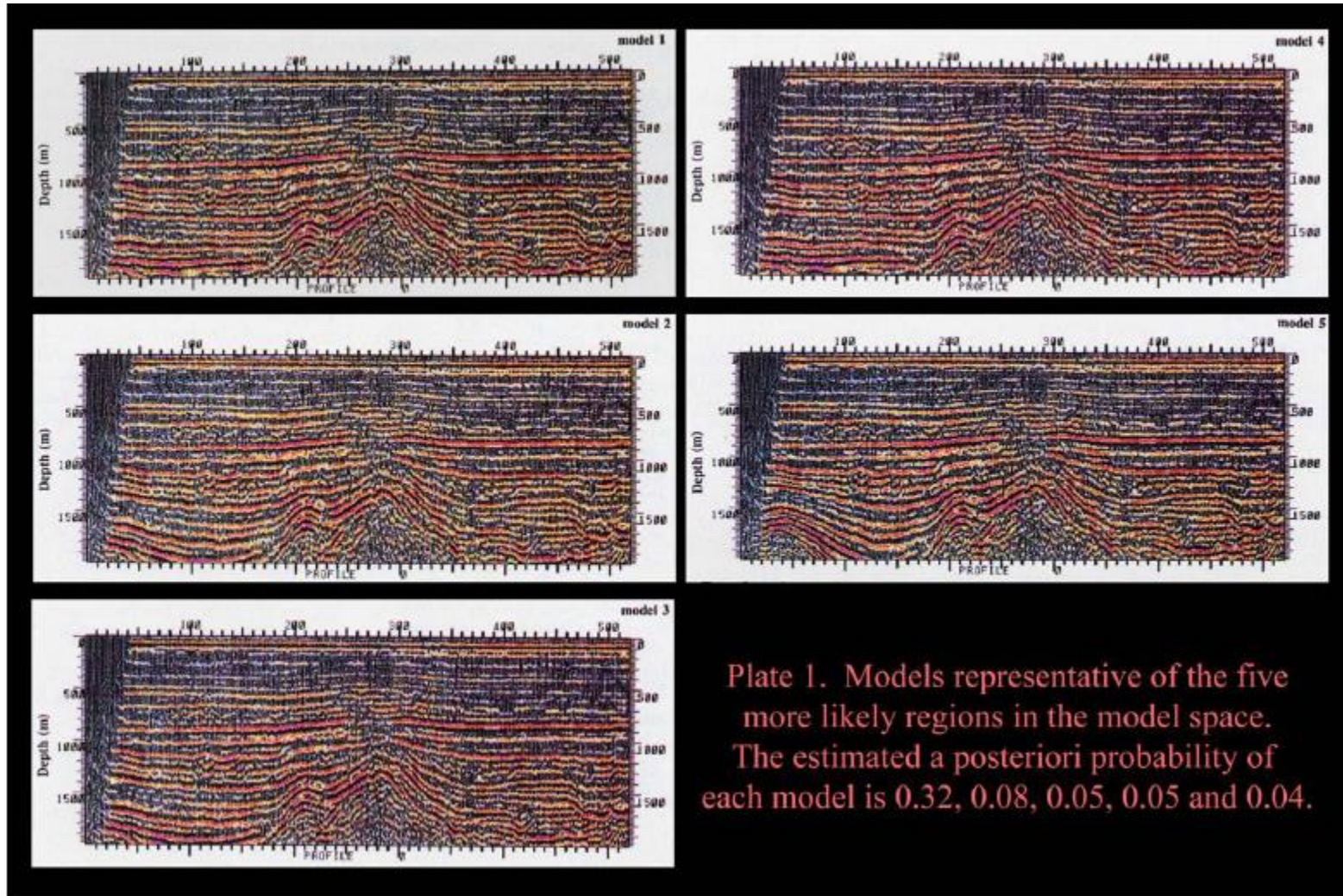


Plate 1. Models representative of the five more likely regions in the model space. The estimated a posteriori probability of each model is 0.32, 0.08, 0.05, 0.05 and 0.04.





Society of Exploration Geophysicists  
*The international society of applied geophysics*



**Location**

**Depth**





Society of Exploration Geophysicists  
The international society of applied geophysics

# *The present status of FWI*



The so-called “full-waveform inversion” or FWI is “« ...technical bubble, and self-proclaimed seismic cure-all”

“... all the current approaches to so-called full-waveform inversion are:

- (1) using the wrong data,
- (2) using the wrong algorithms, and
- (3) using the wrong Earth model, as well.»

*“A timely and necessary antidote to indirect methods and so-called P-wave FWI»*

*A. WEGLEIN, TLE, 2013*



Society of Exploration Geophysicists  
*The international society of applied geophysics*

# *The present status of FWI*



***“The truth is... seismic waves that propagate in the earth hardly satisfy any wave equations.”***

Migration Velocity Inversion with Semblance Analysis  
*H. Zhou, Q. Liao & F. Ortigosa, Repsol, EAGE 2009*



Society of Exploration Geophysicists  
*The international society of applied geophysics*



## Popper, Bayes and The Inverse Problem

*ALBERT TARANTOLA, Nature, 2006*

*“Observations should only be used to falsify possible solutions, not to deduce any particular solution.”*



Society of Exploration Geophysicists  
The international society of applied geophysics

# Summary



- Today a large number of semi-heuristic algorithms and strategies exist, but they **do not solve** the inverse problem
- Bayesian approach **in principle** provides a framework for combining the a priori model information with the information contained in the data to arrive at the a posteriori model distribution
- *In fact, the validation of our assumptions regarding the real model is the most crucial step in inversion.*



Society of Exploration Geophysicists  
*The international society of applied geophysics*

# What do we need to achieve alternative subsurface image?



- *Develop a fundamentally new procedure that can construct the image without precise velocity information*

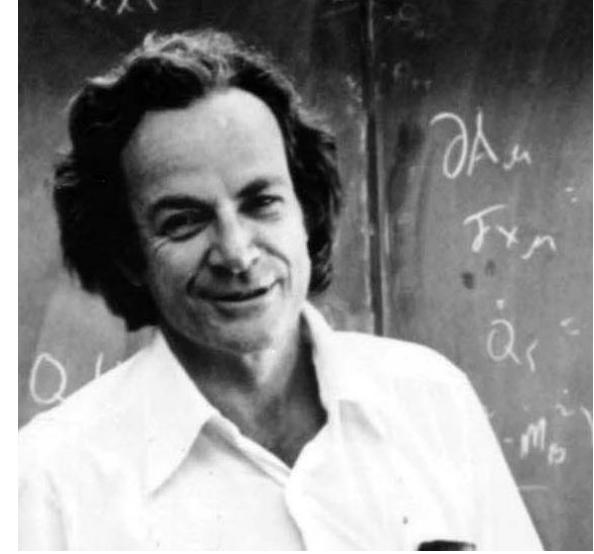


Society of Exploration Geophysicists

*The international society of applied geophysics*

*“An idea which looks completely paradoxical at first, if analyzed to completion in all its details and in experimental situations, may in fact not be paradoxical”*

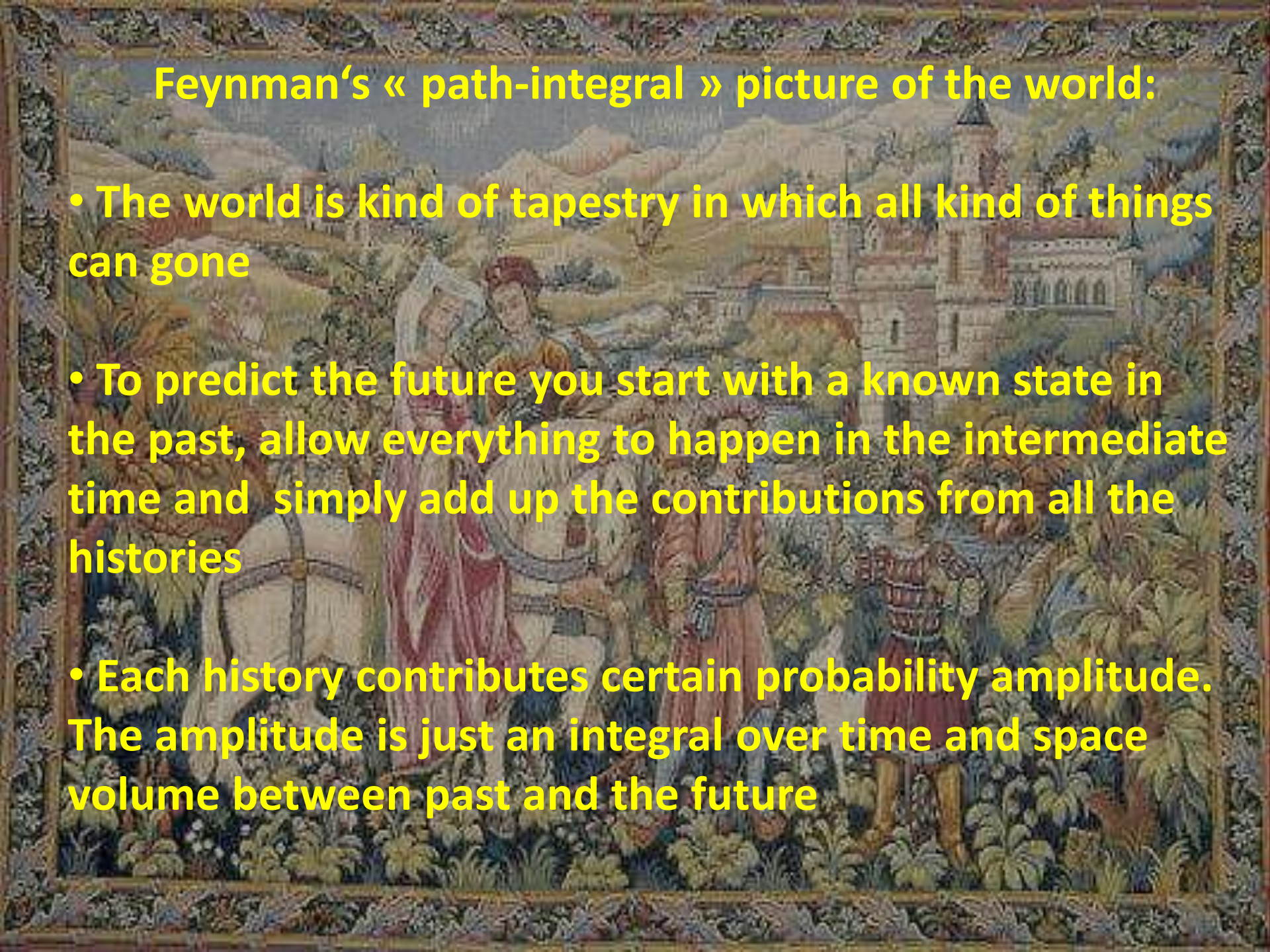
*Richard Feynman*



**Quantum seismic imaging: is it possible?**

## Feynman's « path-integral » picture of the world:

- The world is kind of tapestry in which all kind of things can gone
- To predict the future you start with a known state in the past, allow everything to happen in the intermediate time and simply add up the contributions from all the histories
- Each history contributes certain probability amplitude. The amplitude is just an integral over time and space volume between past and the future



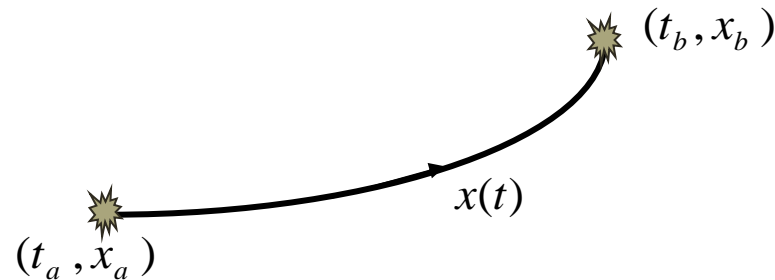




# Classical mechanics



In classical Newton's theory a particle have just a single trajectory



The classical path  $\hat{x}(t)$  is singled out of all possible paths as the one having the least action  $S$

$$S = \int_{t_a}^{t_b} dt L(x, \dot{x}, t)$$

where  $L$  – is the Lagrangian

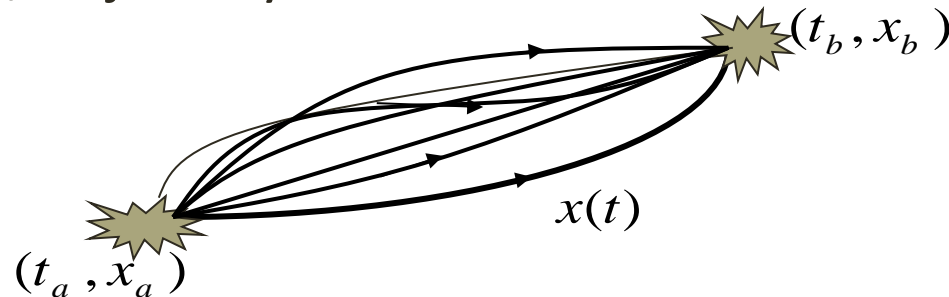


# Quantum mechanics



Society of Exploration Geophysicists  
The international society of applied geophysics

In Feynman's path-integral approach, a particle does not have just a single history/trajectory as it would have in classical theory.



Instead of only considering the classical trajectory, consider every possible path between  $a$  and  $b$ . Each path contributes to the total amplitude. This amplitude is

$$K(b, a) = \sum_{\substack{\text{all paths} \\ \text{from } a \text{ to } b}} A_i(x(t))$$

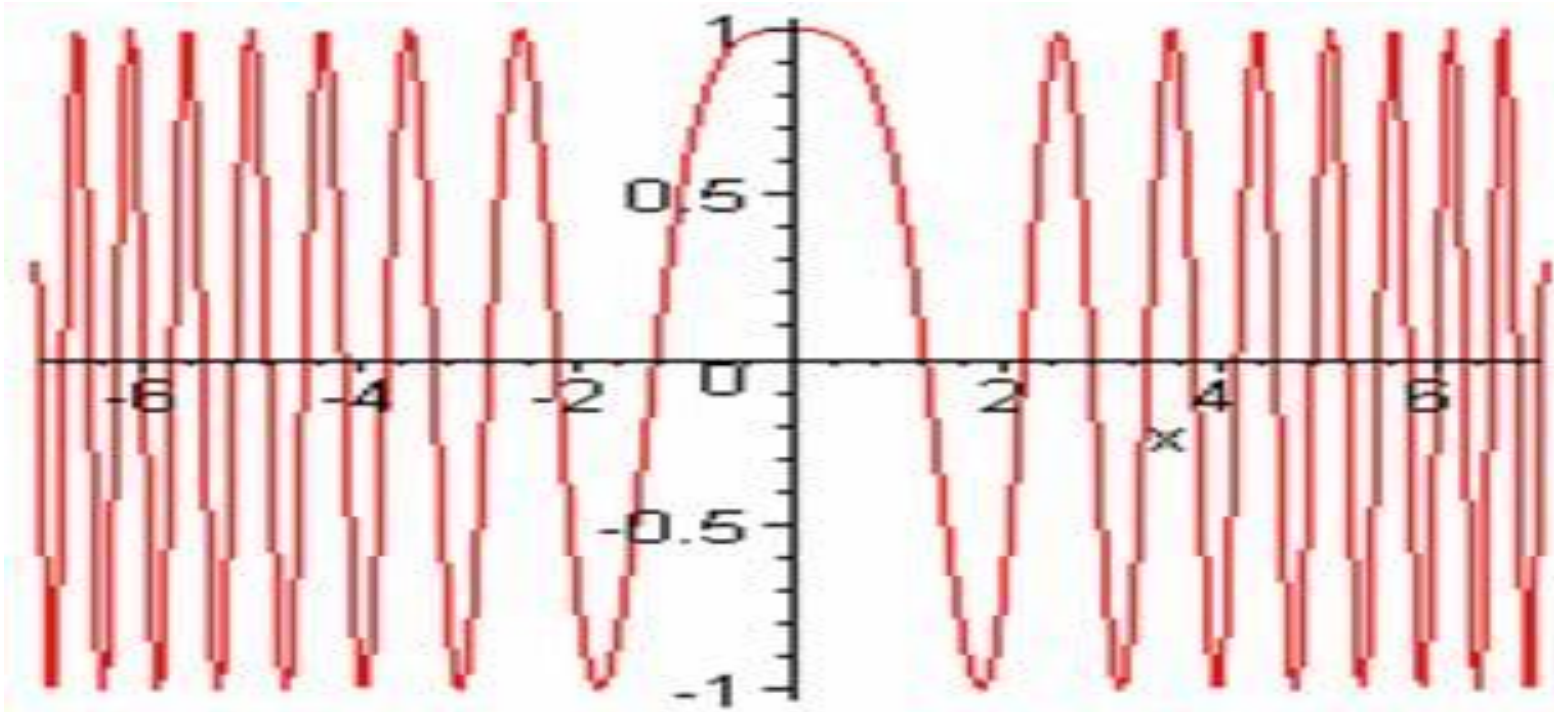
where  $A$  is the contribution of each individual path

$$A_i(x(t)) = \text{const} * \underbrace{\exp[iS_i(x(t)) / \hbar]}_W$$



Society of Exploration Geophysicists  
The international society of applied geophysics

# Quantum mechanics and Newton's physics



$$w(x(t)) = \exp[iS(x(t)) / \hbar]$$



# STACK

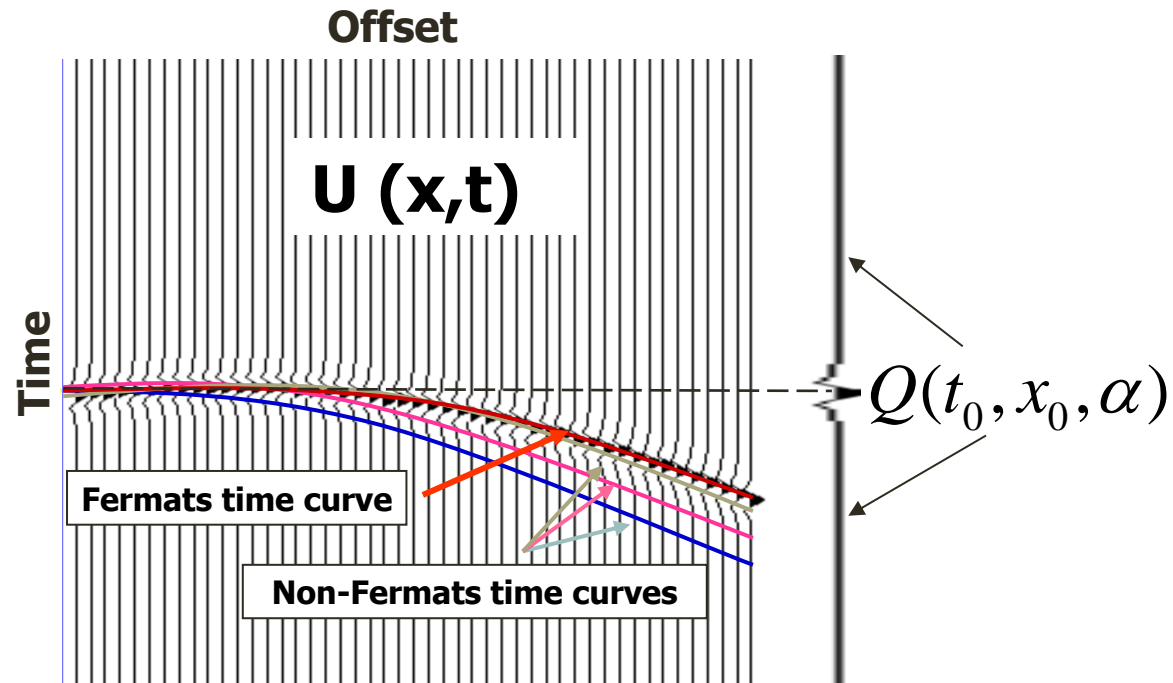


Society of Exploration Geophysicists  
The international society of applied geophysics

$$Q(t_0, x_0; \alpha) = \int dh \int dt U(t, h) \delta(t - \tau(x_0, t_0, h; \alpha))$$

where  $U(t, h)$  is the recorded CDP gather for location  $x_0$ ,  $h$  - is the offset to be summed over the measurement aperture. The quantity  $\tau = \tau(x_0, t_0, h; \alpha)$

represents the time-integration path/trajectory, which is parametrized by a parameter  $\alpha$



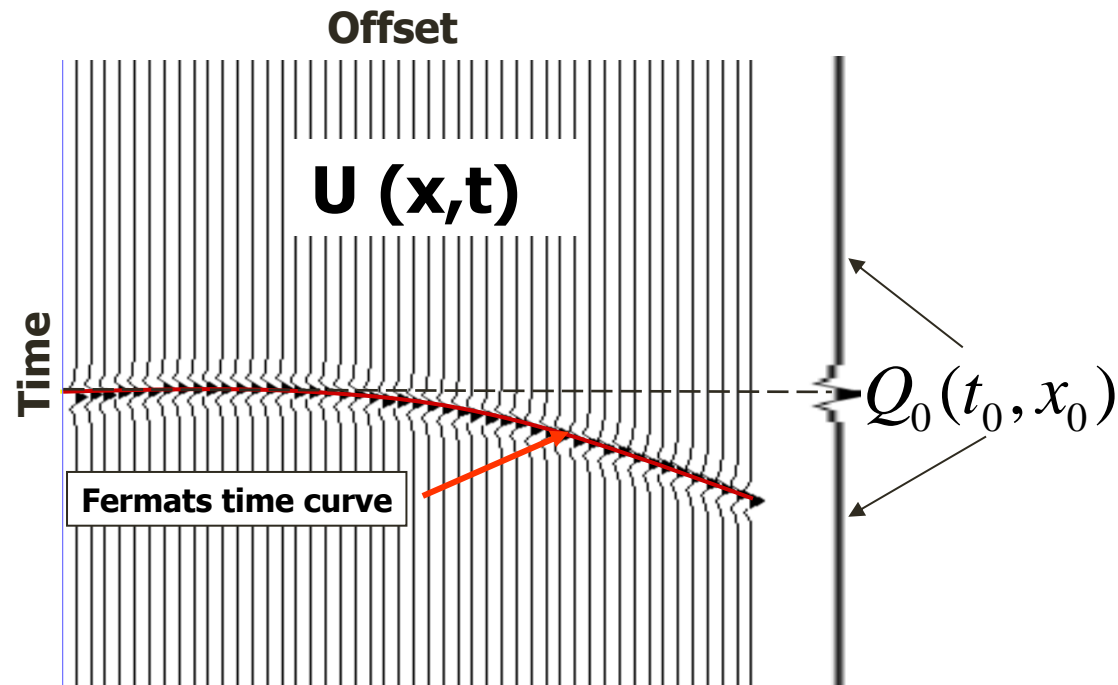


# STACK



The conventional zero-offset stack is obtained by optimizing for  $\alpha$ , i.e.

$$Q_0(t_0, x_0) = Q(t_0, x_0; \alpha_0)$$



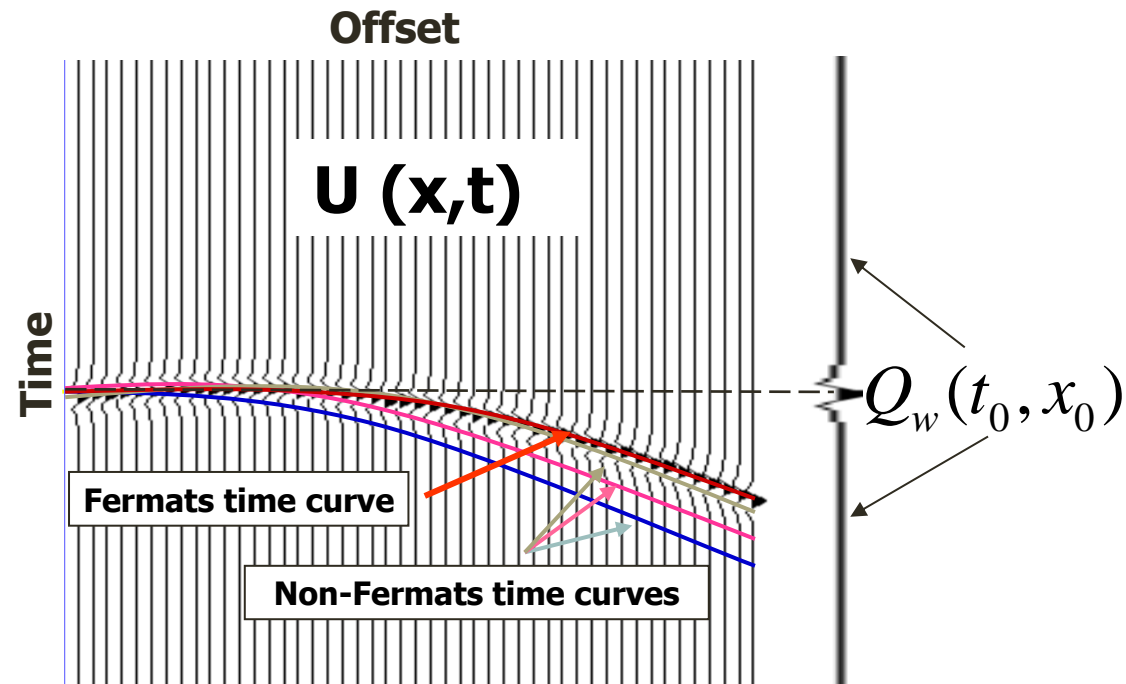


# Path-integral stack



$$Q_w = \int d\alpha w(\alpha) Q(\alpha)$$

Instead of stacking seismic data along only one time trajectory corresponding to the Fermat path our construction involves summation over all possible time trajectories.





# Path-integral stack

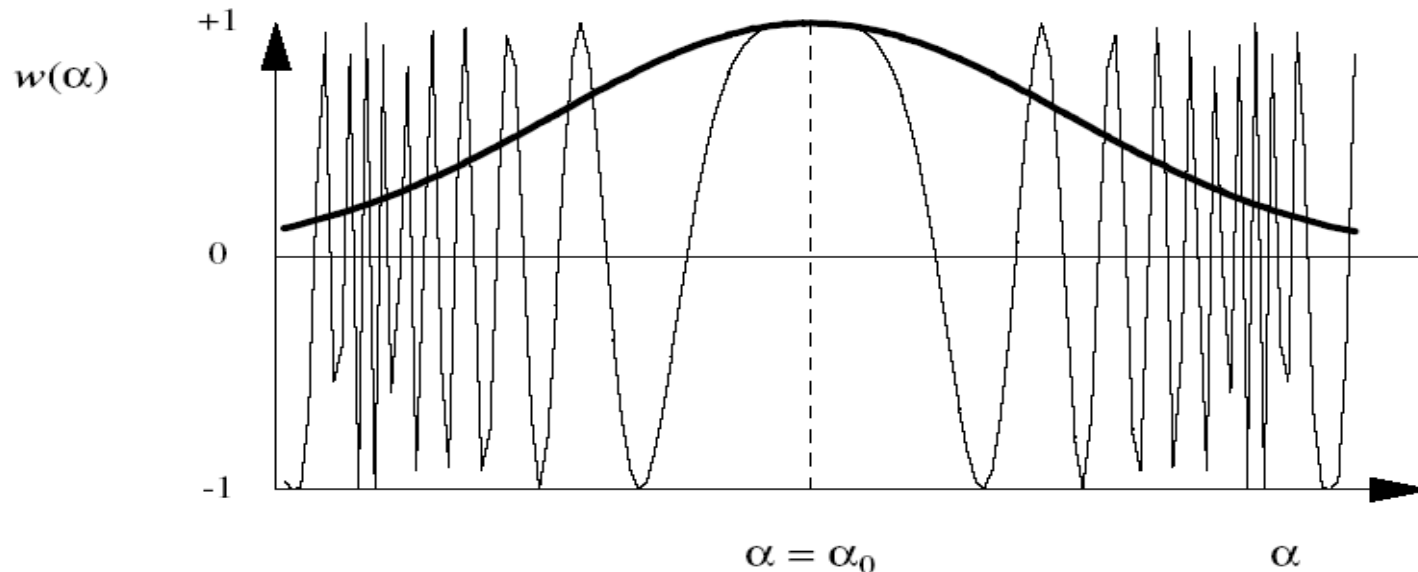


The path-integral stack  $Q_F$  approach the classical limit  $Q_O$  for  $\beta \rightarrow \infty$ .

This can be shown by a stationary-phase approximation under the assumptions

$$Q(\alpha) \rightarrow 0, \text{ when } |\alpha - \alpha_0| \rightarrow \infty, S'(\alpha_0) = 0, S''(\alpha_0) \neq 0$$

$$Q_F \approx \exp[i\beta S(\alpha_0) + i\mu\pi/4] \sqrt{\frac{2\pi}{\beta|S''(\alpha_0)|}} Q_0$$





Society of Exploration Geophysicists  
*The international society of applied geophysics*

# Path-integral imaging



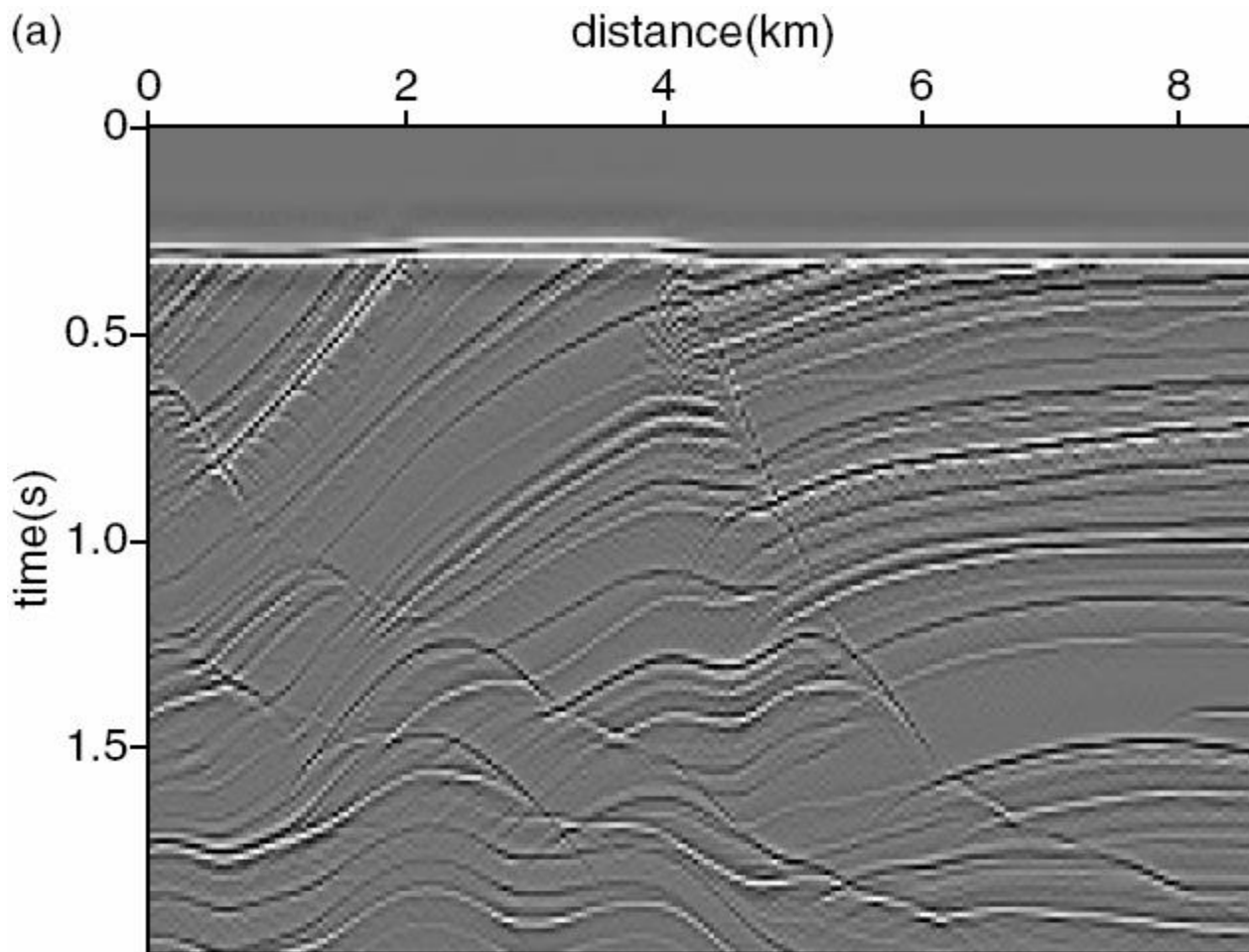
*The imaging consists of weighted summation along a representative sample of all possible travel time curves (paths) between the source and observation points*





Society of Exploration Geophysicists  
*The international society of applied geophysics*

# Path-integral imaging

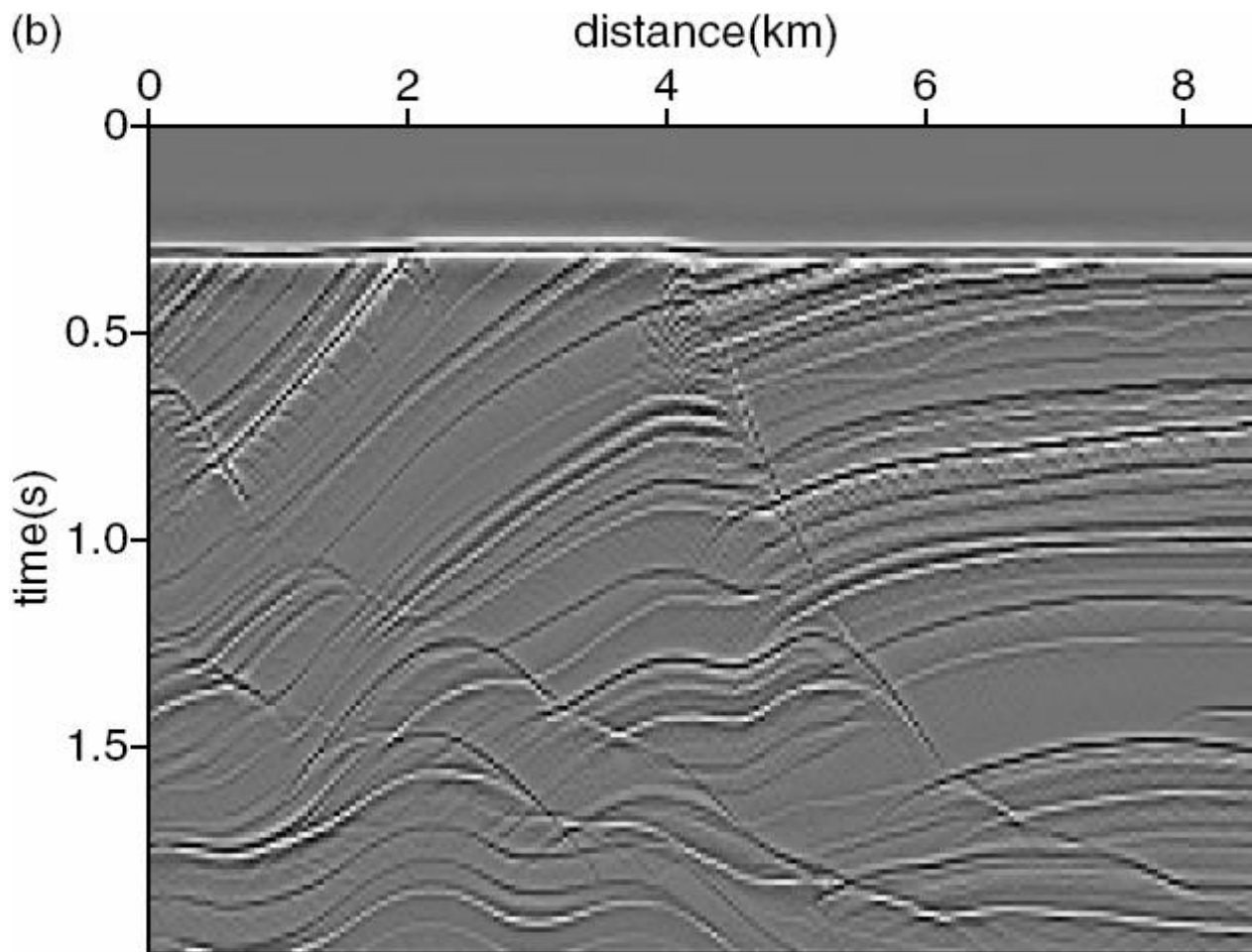


**Zero-offset section**



Society of Exploration Geophysicists  
*The international society of applied geophysics*

# Path-integral imaging

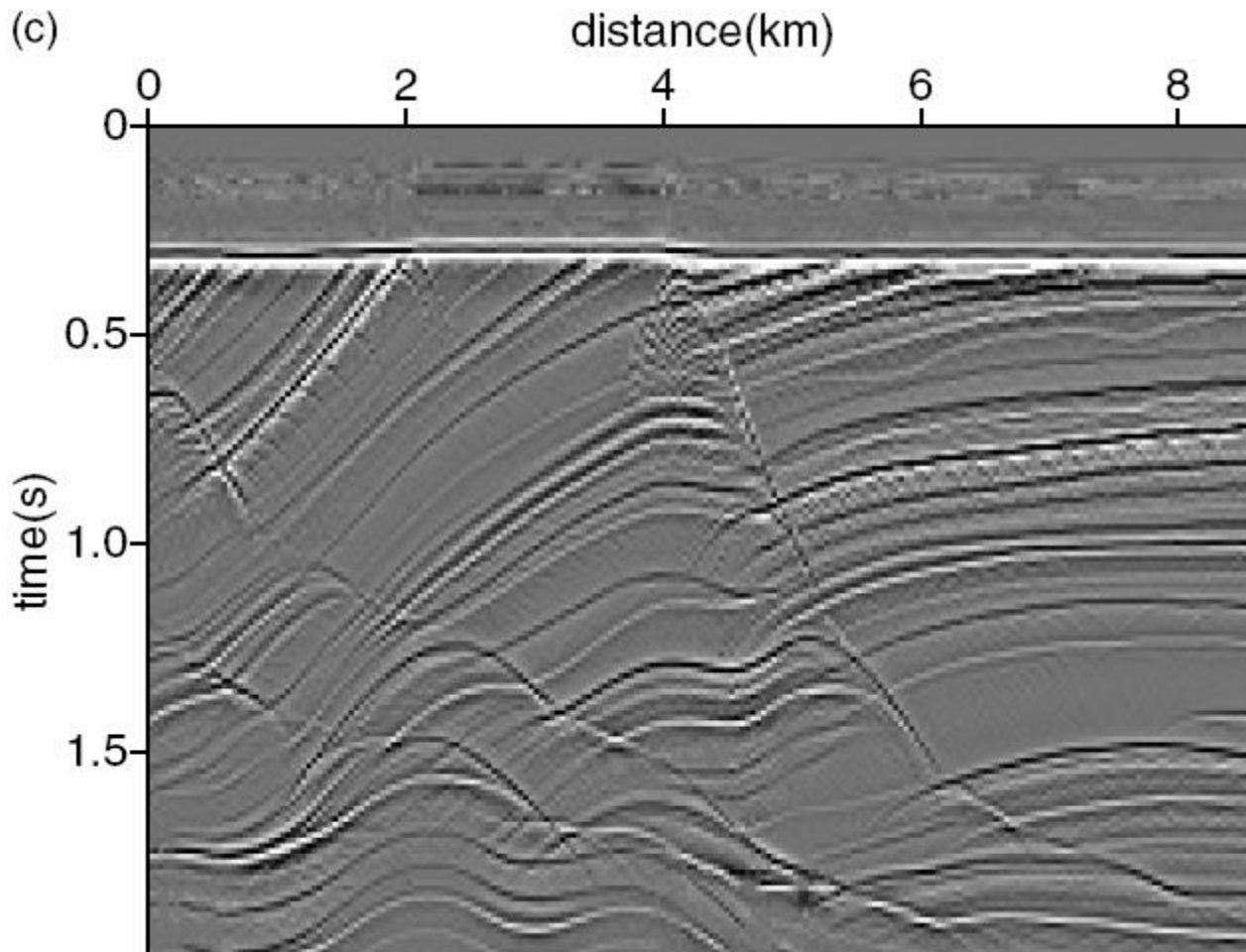


**Stacked section**



Society of Exploration Geophysicists  
*The international society of applied geophysics*

# Path-integral imaging



**Path-summation section**



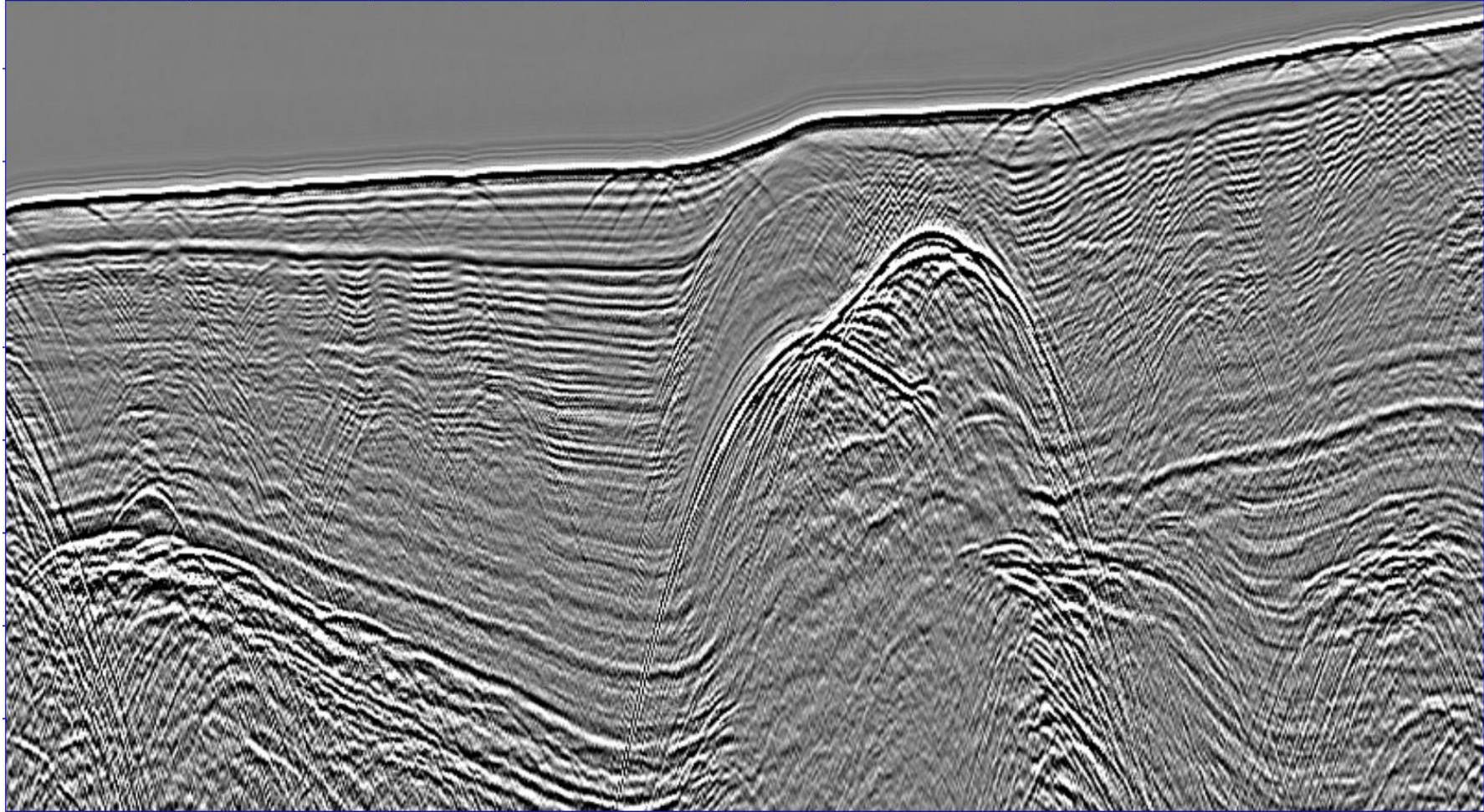
Society of Exploration Geophysicists  
*The international society of applied geophysics*

# Path-integral imaging



CMP

Time



Near offset section

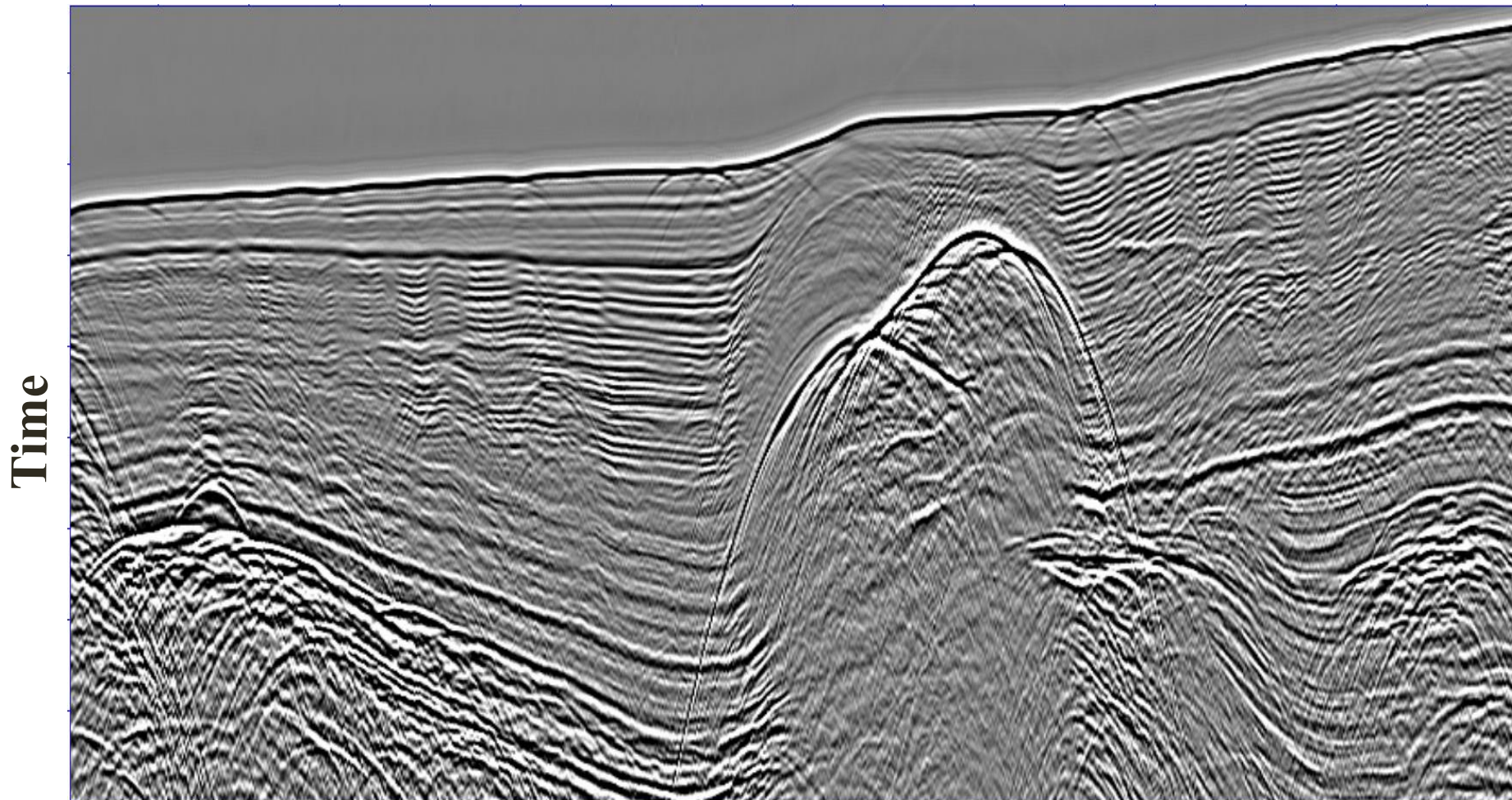


Society of Exploration Geophysicists  
*The international society of applied geophysics*

# Path-integral imaging



CMP

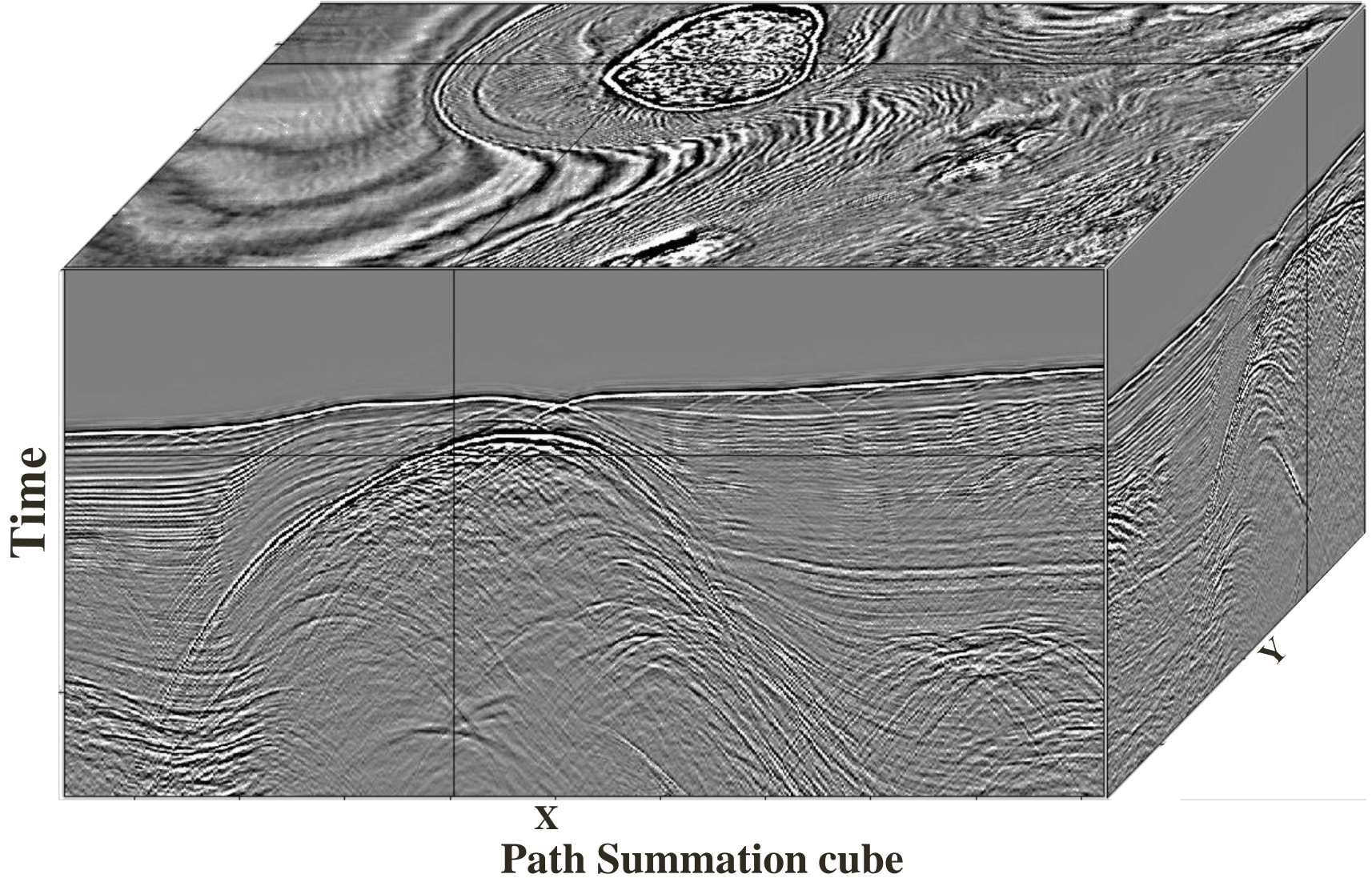


Path Summation stack



Society of Exploration Geophysicists  
*The international society of applied geophysics*

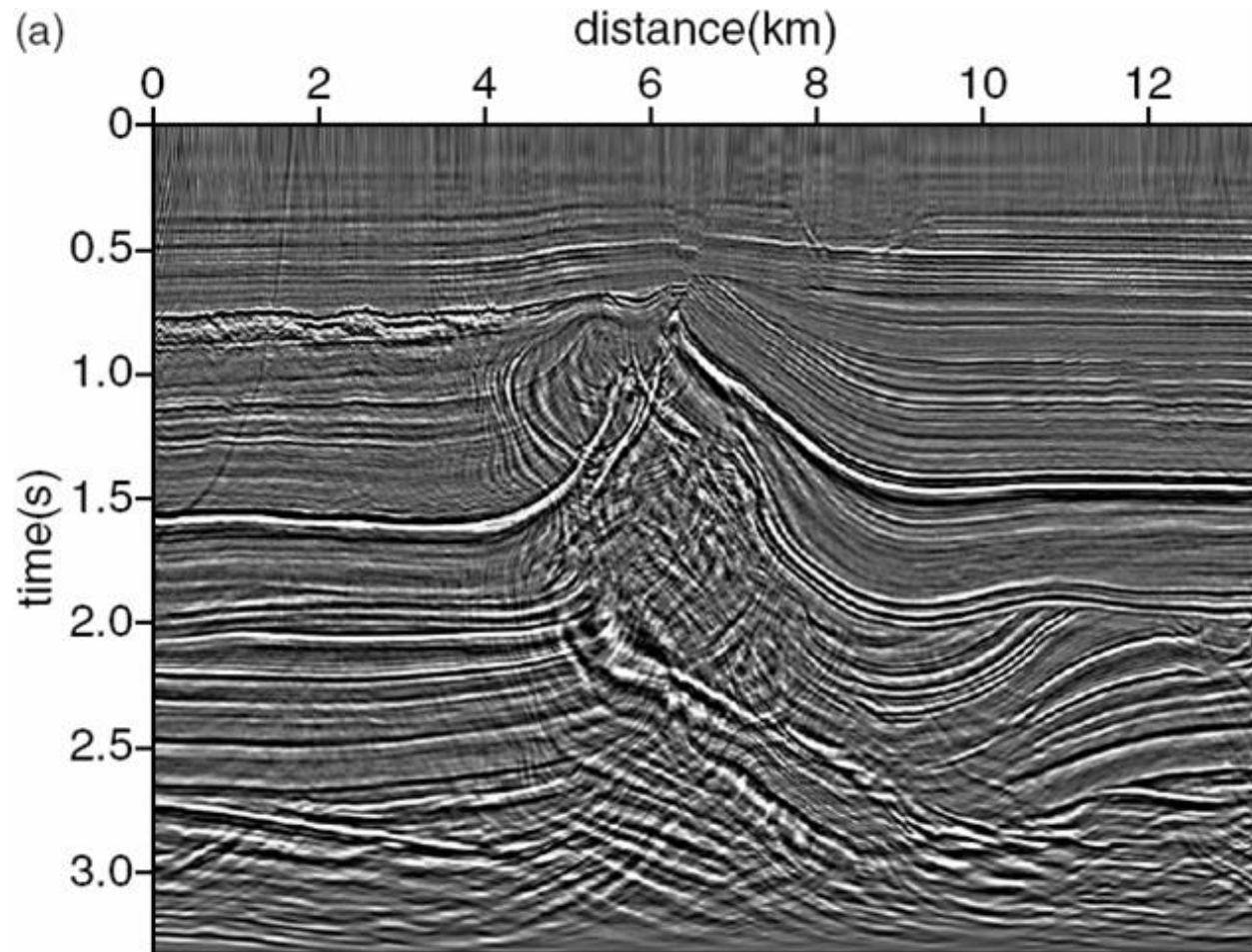
# Path-integral imaging





Society of Exploration Geophysicists  
*The international society of applied geophysics*

# Path-integral imaging

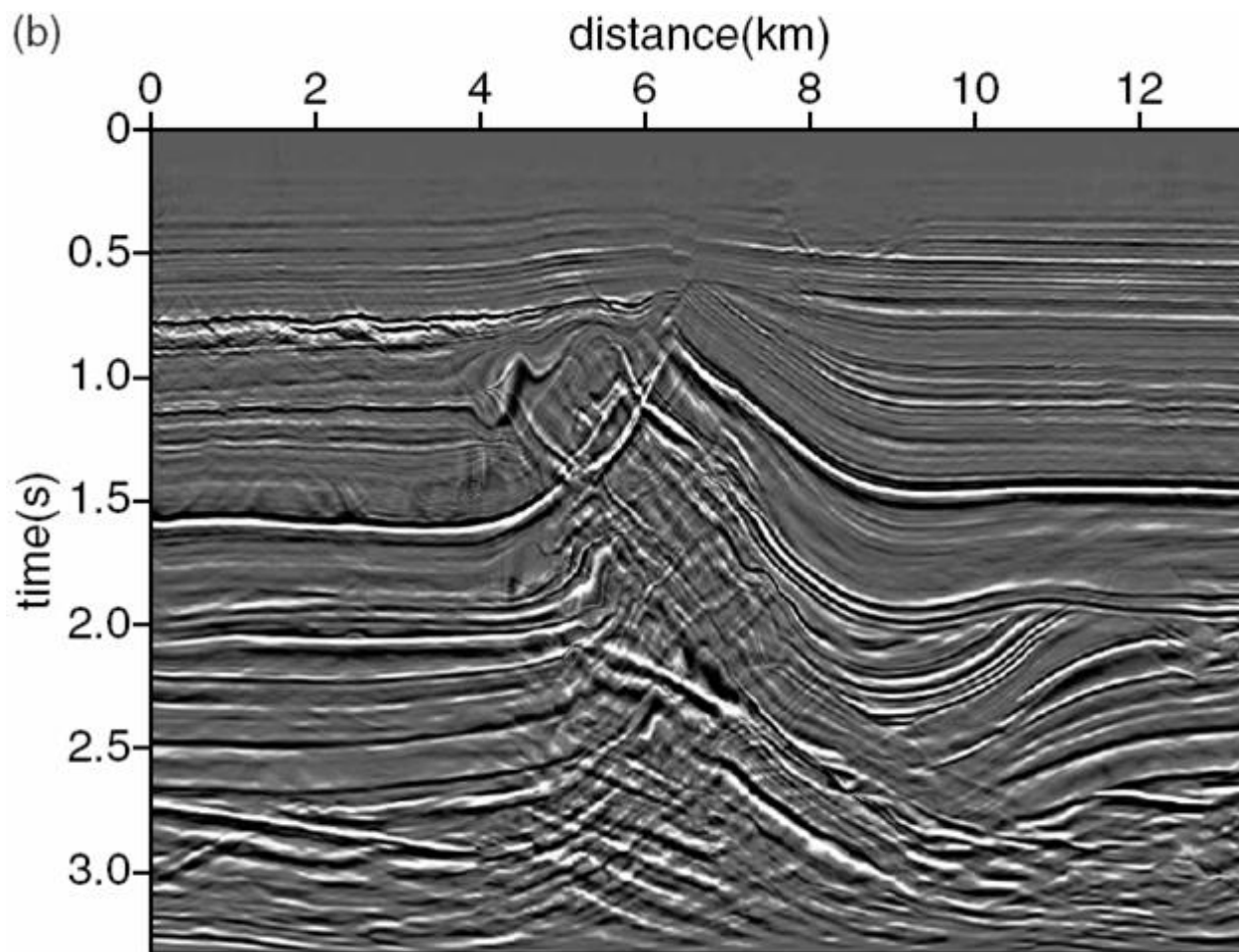


**PSTM**



Society of Exploration Geophysicists  
*The international society of applied geophysics*

# Path-integral imaging



**Path-summation time migration**





## Summary

- Quantum seismic imaging method provides a new framework for subsurface imaging without precise knowledge or selection of a velocity model
- Quantum seismic imaging can be considered as a model-independent technique, since it does not involve any velocity or parameter estimation in a common sense
- The image is constructed by summation over many possible trajectories
- The quantum imaging converges to a standard imaging procedure only in trivial situations of a deterministic and known velocity model



Society of Exploration Geophysicists  
The international society of applied geophysics



“Today many quantum physicists believe that quantum principles in fact apply on all scales. By combining the (quantum) approach with other (e.g. mechanical) systems, or by applying its basic ideas in different contexts, it may be possible to bring quantum effects ever closer to our everyday experience.”

Lvovsky, Ghobadi, Simon, Chandra and Prasad  
*“Observation of micro-macro entanglement of light.”*  
Nature, Physics, 2013



Society of Exploration Geophysicists  
The international society of applied geophysics



Path integrals have been introduced in seismic ***wave modeling*** (Lomax, 1999; Schlottmann, 1999).

***Bayesian approach, Monte Carlo and simulated annealing*** methods can also be formulated and interpreted in terms of the Feynman path integral (Lemm et al., 2005, Lee et al., 2000).

***Interferometry*** can be considered in the path integral framework.

“... physics ... has been reduced to calculating only the probability of an event, and not predicting exactly what happens... Yes. That’s the way it is: **Nature permits us to calculate only probabilities...**”  
(Feynman, 1988).

*"Good continuous reflectors are for kids; unconformities are for men."  
Nigel Anstey*

# Diffraction imaging



Society of Exploration Geophysicists  
The international society of applied geophysics



- Reflection seismology is a method to estimate the properties of the Earth's subsurface from *reflected* seismic waves
- Specular *reflections* are the ones being used conventionally
- Specular *reflections* are generated by smooth interfaces



**Society of Exploration Geophysicists**  
*The international society of applied geophysics*



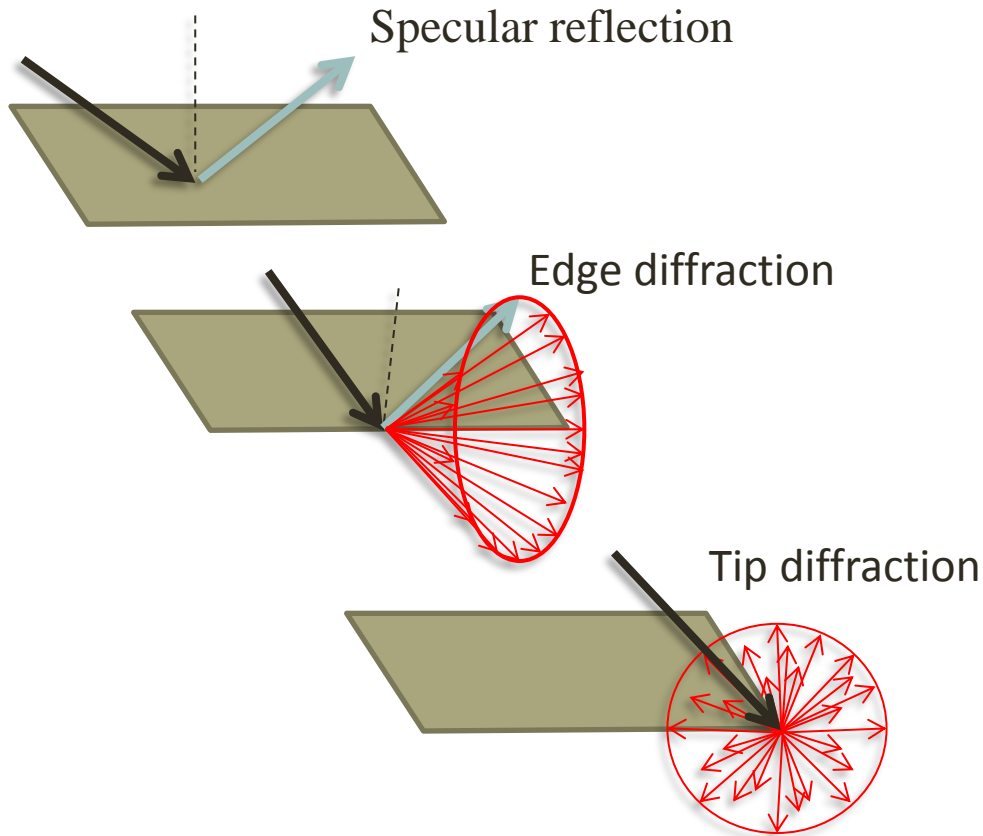
Diffractions are direct indicators of small scale heterogeneities in the subsurface...

There are many evidences that diffractive component of the wavefield is a key ingredient in establishing resolution...



Society of Exploration Geophysicists  
The international society of applied geophysics

# Seismic diffraction

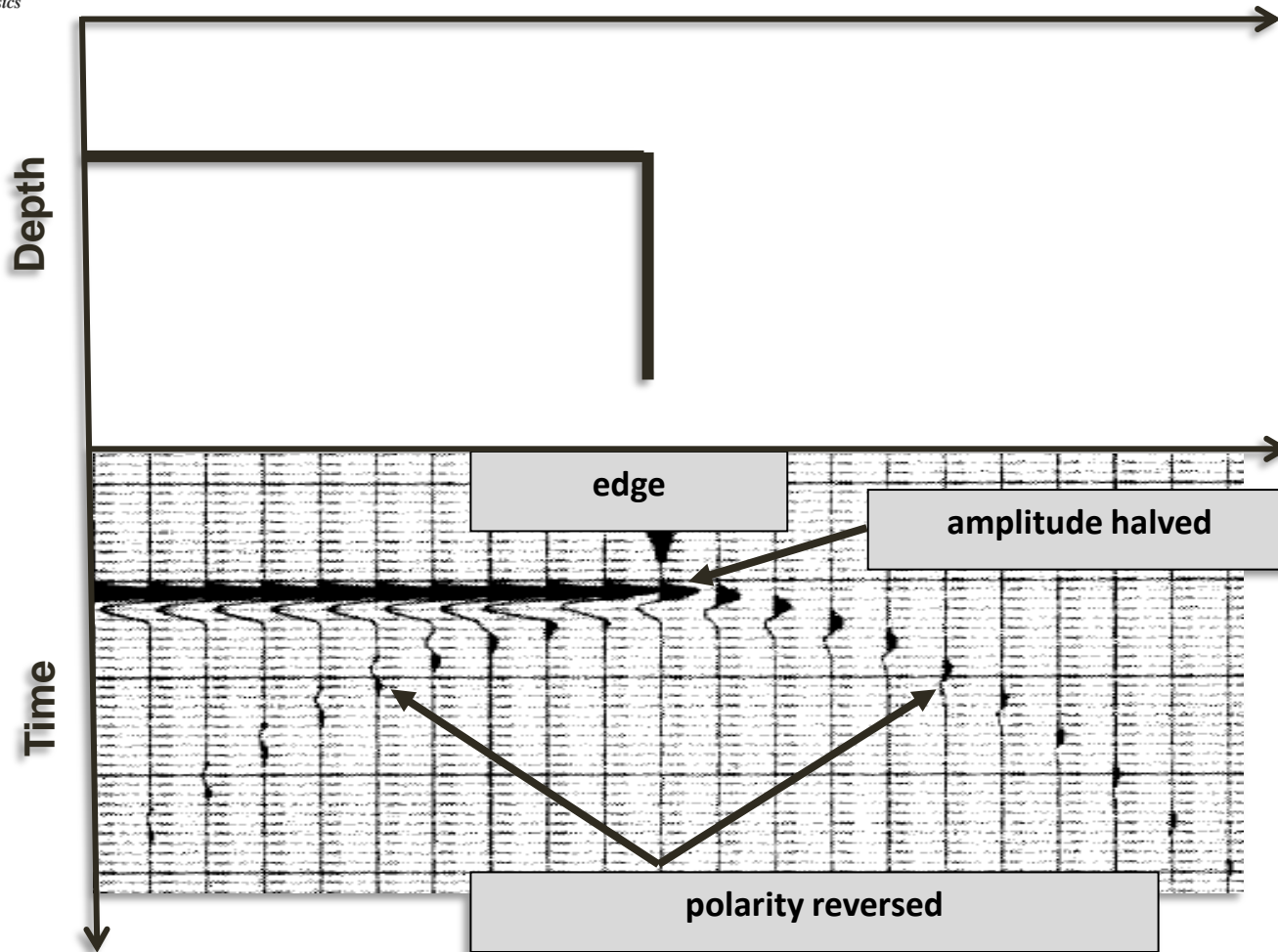




# Seismic diffraction



Location







Society of Exploration Geophysicists  
*The international society of applied geophysics*

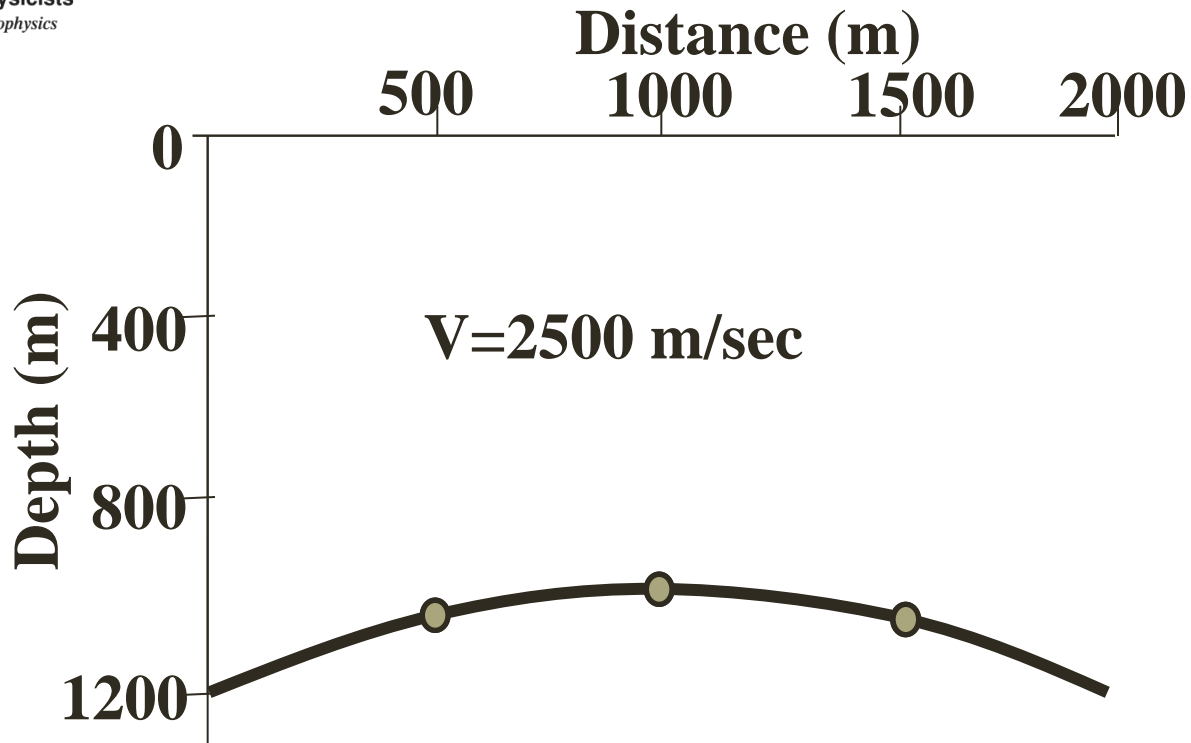


## Ways to separate diffractive and reflective components:

1. Weighted summation
2. Modified Kirchhoff migration
3. Plane wave destructor
4. Radon transform in the dip angle domain
5. Local Angle (LAD) domain



# Model

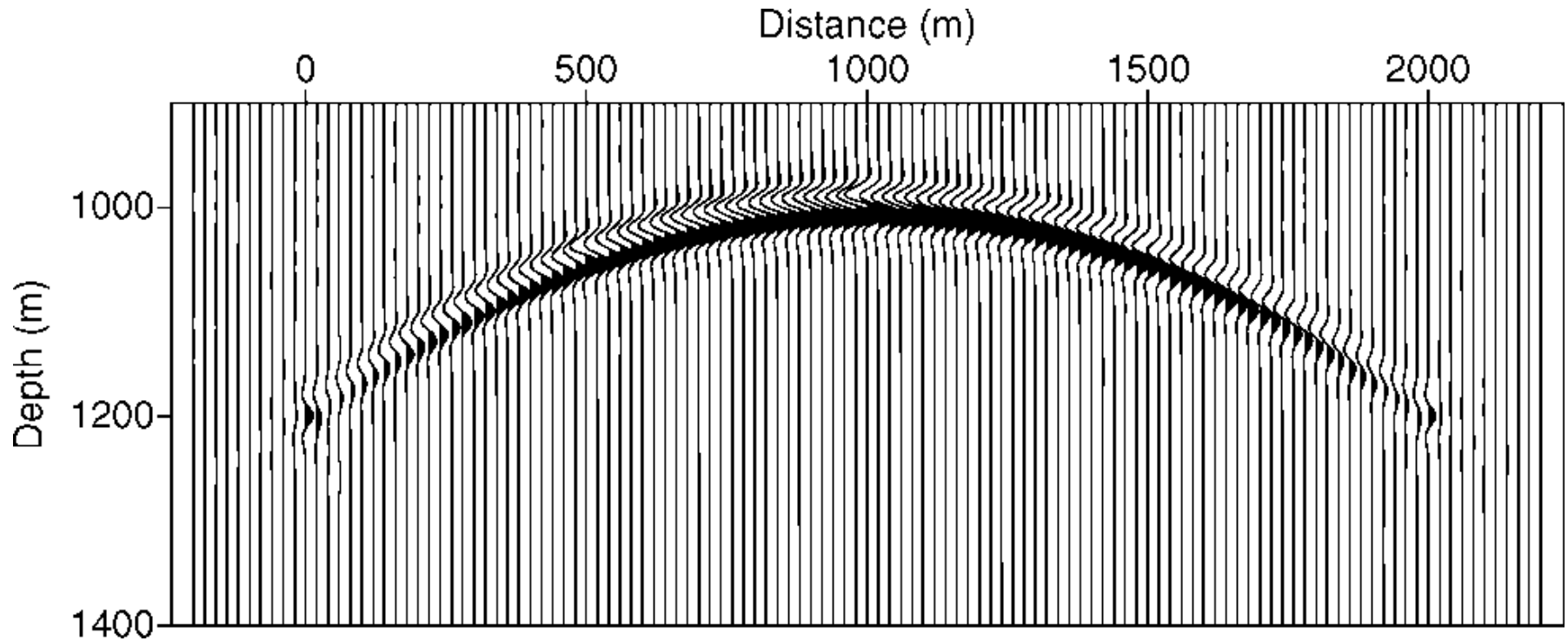


Model with one reflector and a constant velocity. Three point scatterers are located directly on the reflector



Society of Exploration Geophysicists  
*The international society of applied geophysics*

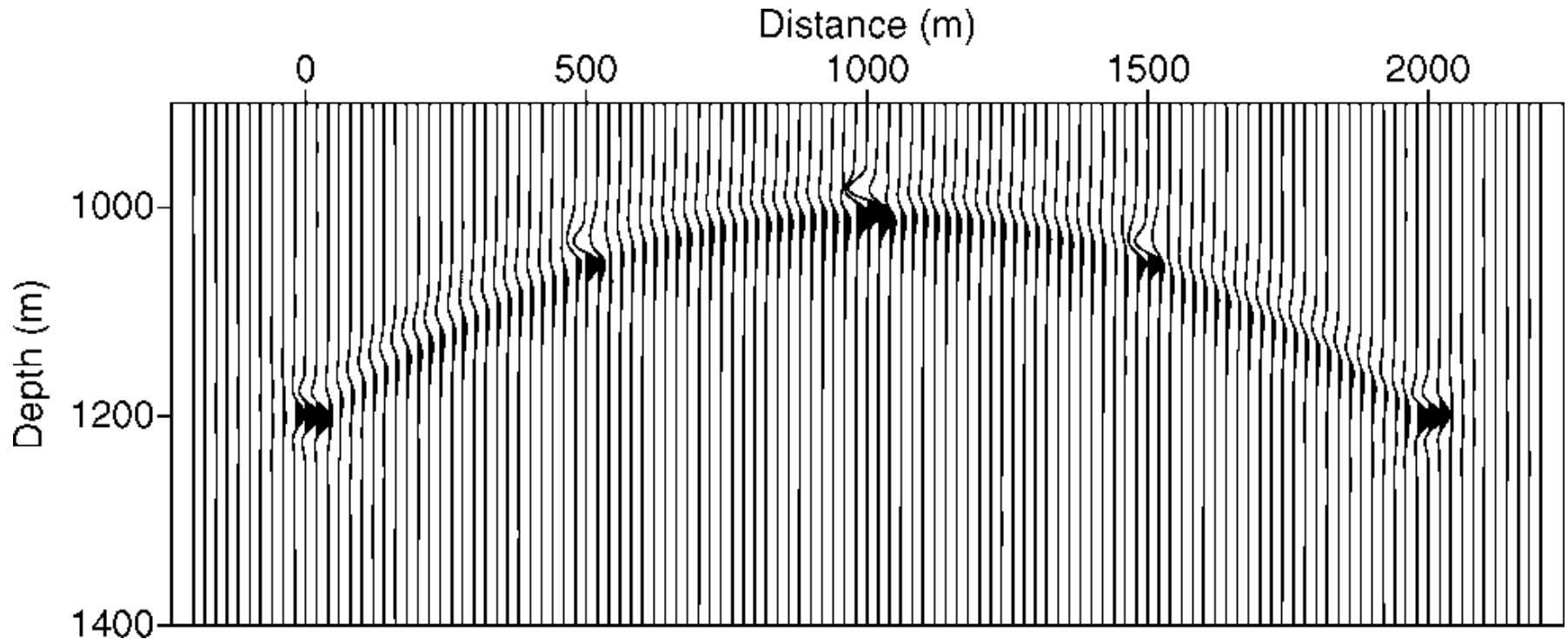
# PSDM



Prestack depth migration image of the full wavefield. Scatterers are almost invisible due to their weak amplitudes



# Diffraction image

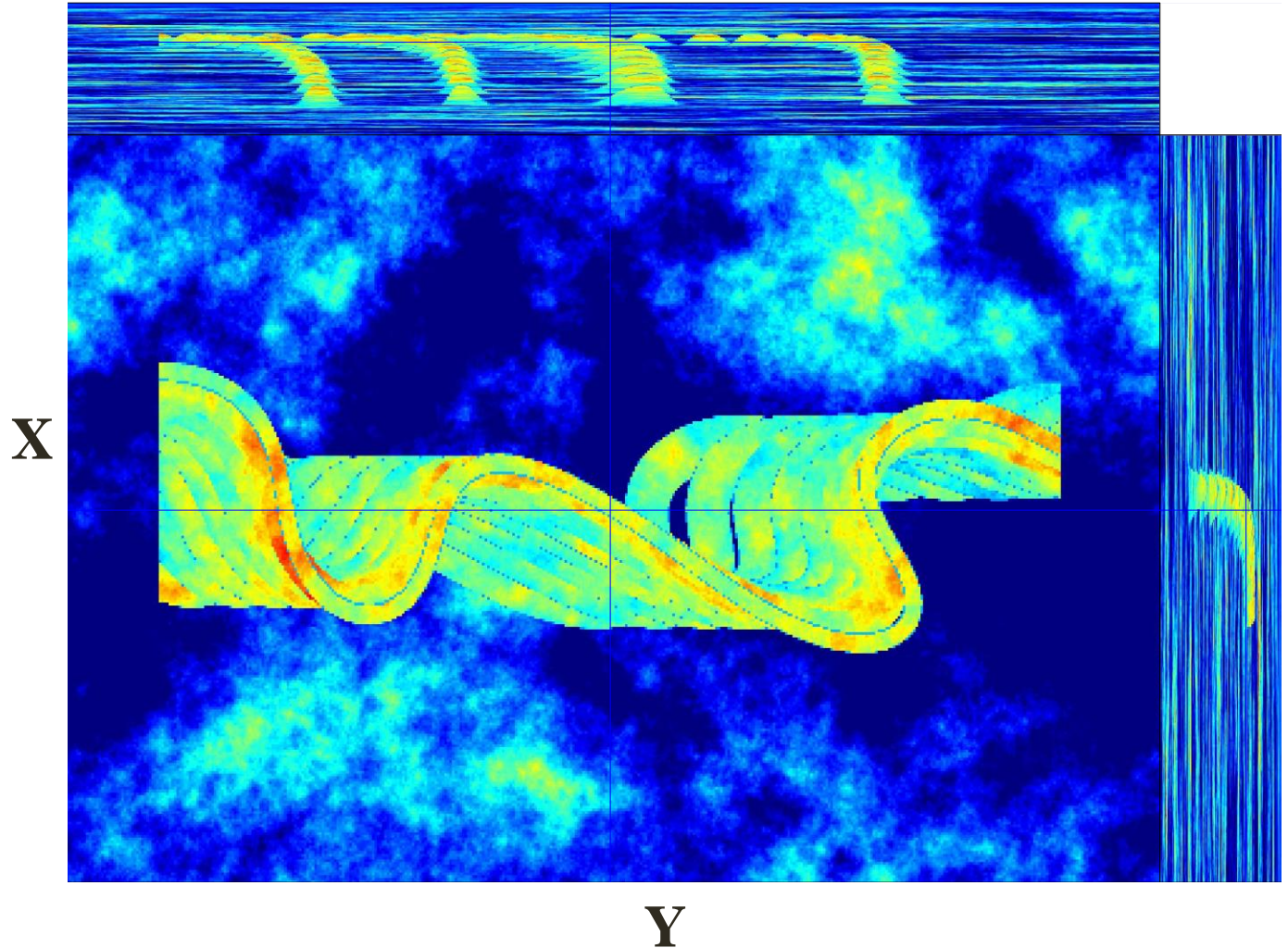


Depth migration of diffraction shot gathers. Three point scatterers are well imaged and can be reliably detected from interpreting the image. Two additional diffractors located at the left and right sides of the figure are caused by the edges of the interface



Society of Exploration Geophysicists  
*The international society of applied geophysics*

# Synthetic velocity model for a channelized reservoir

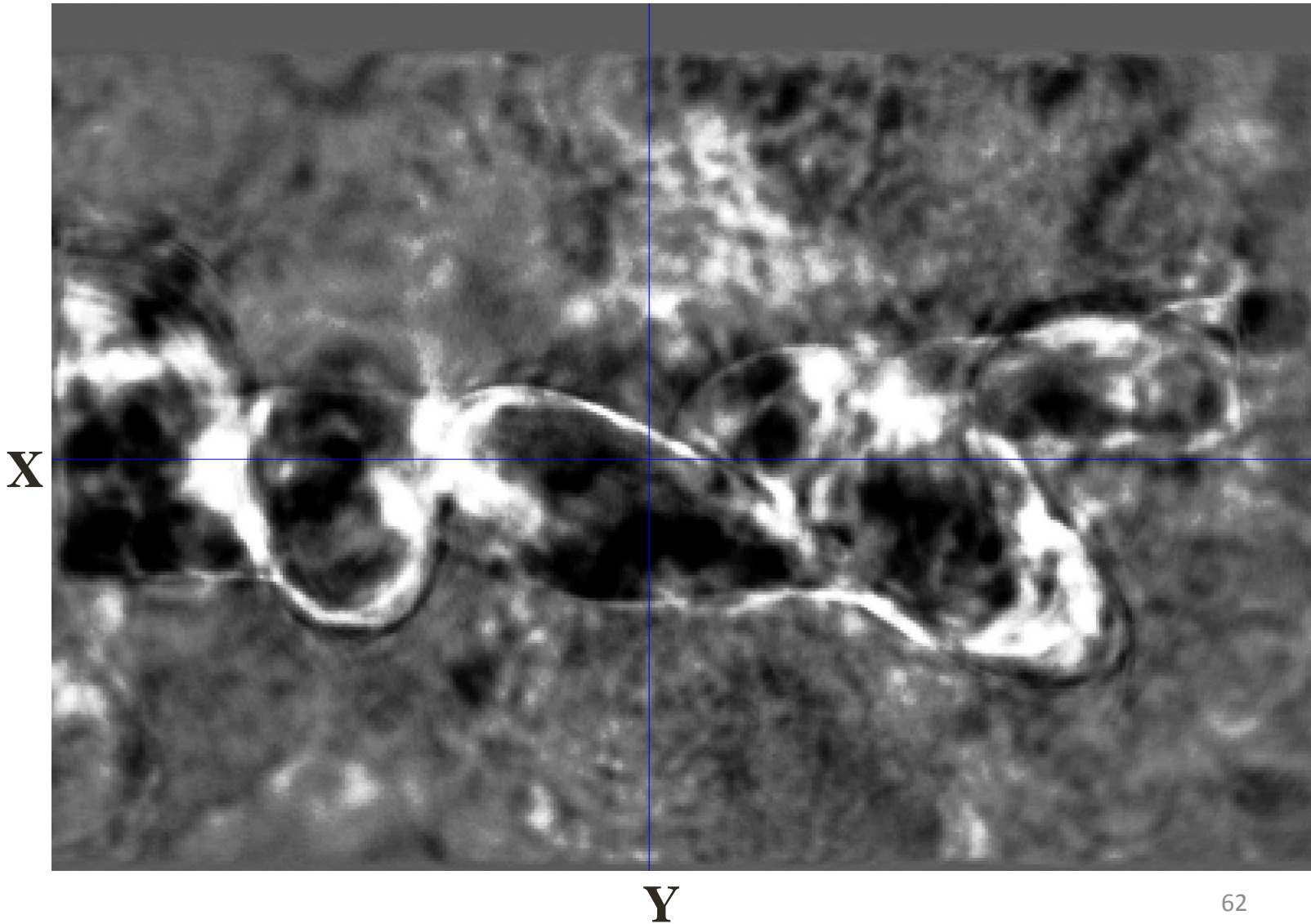




# Migrated time slice of the full wavefield



Society of Exploration Geophysicists  
*The international society of applied geophysics*

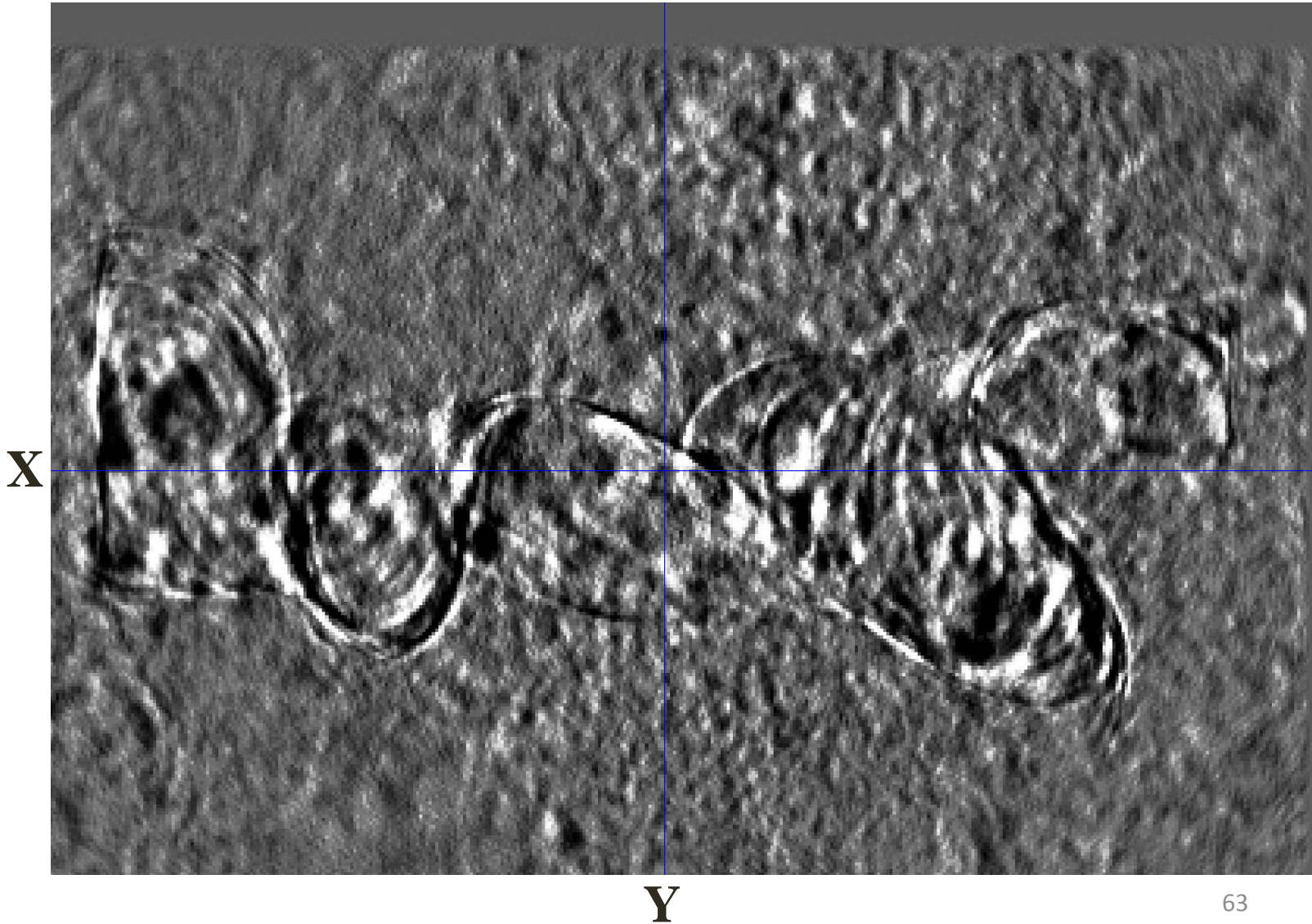




# Migrated time slice of the diffractive component



Society of Exploration Geophysicists  
*The international society of applied geophysics*





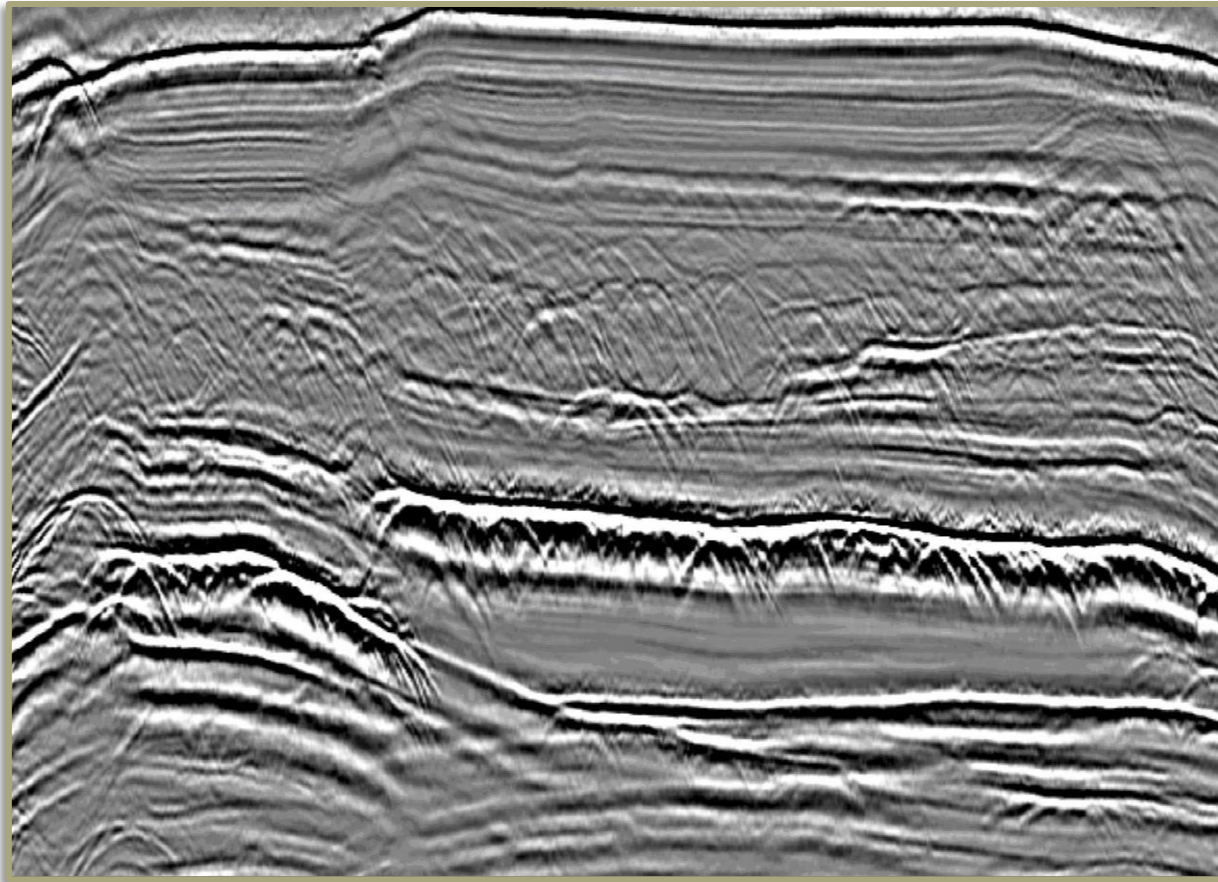
Society of Exploration Geophysicists  
The international society of applied geophysics

# Stacked section



location

two way time



*After Berkovich et al., 2009*





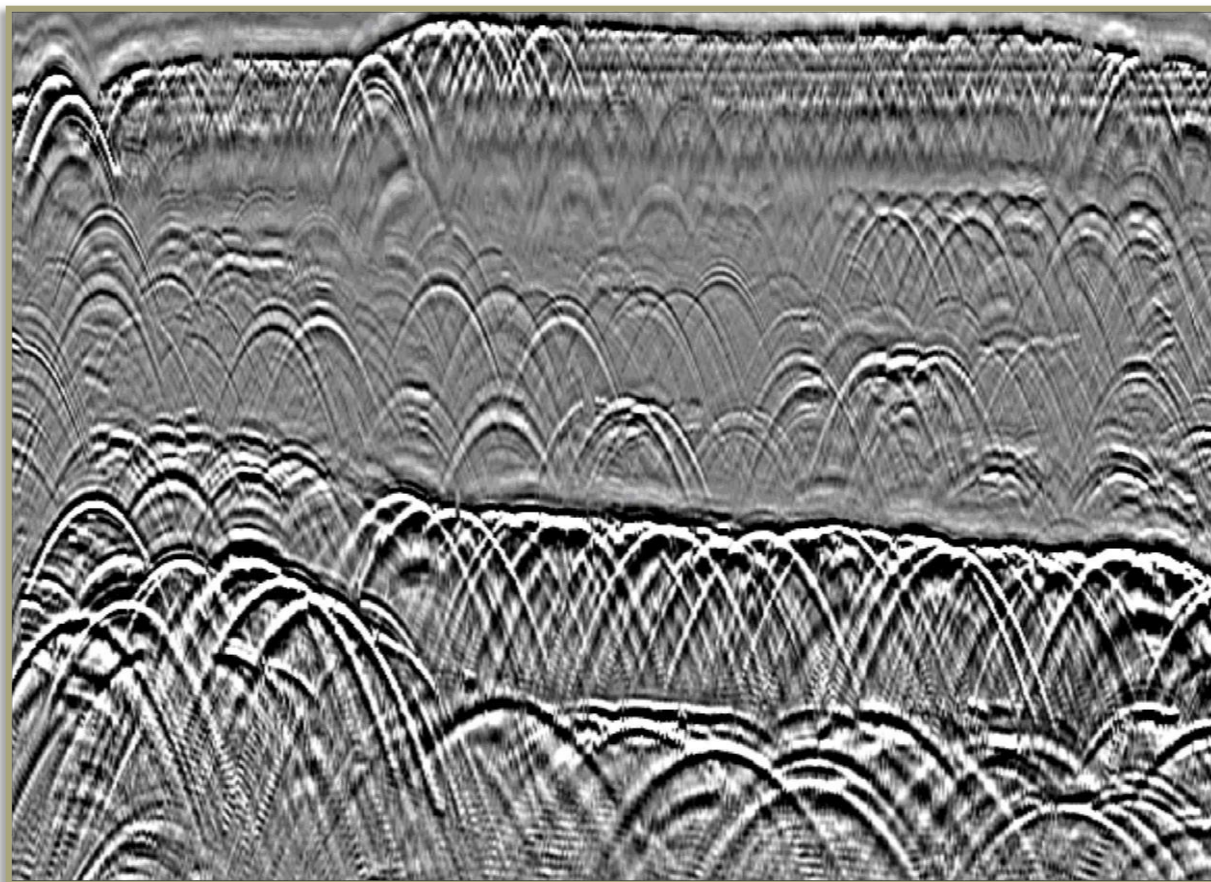
Society of Exploration Geophysicists  
The international society of applied geophysics

# Diffraction stacked section



location

two way time



*After Berkovich et al., 2009*



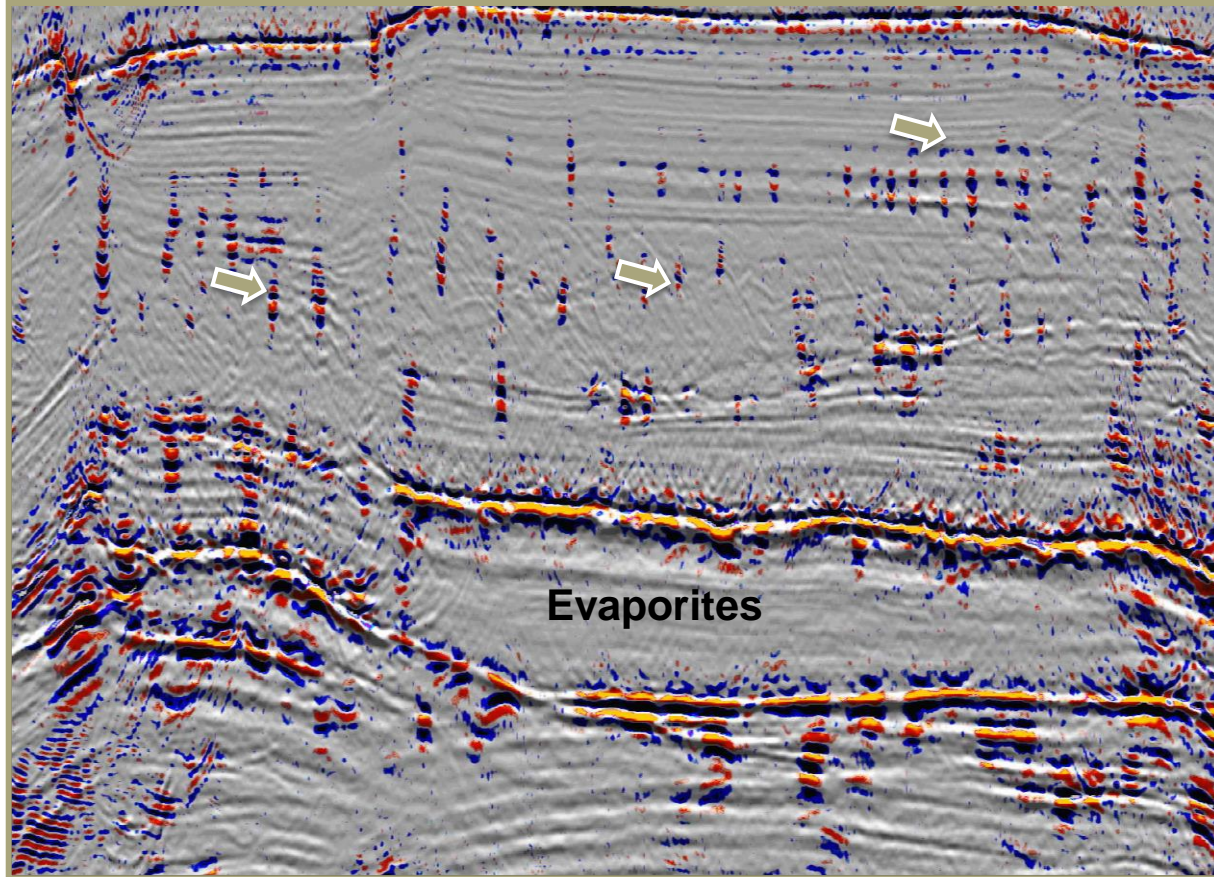
Society of Exploration Geophysicists  
The international society of applied geophysics

# Migrated diffraction image



location

two way time



After Berkovich et al., 2009



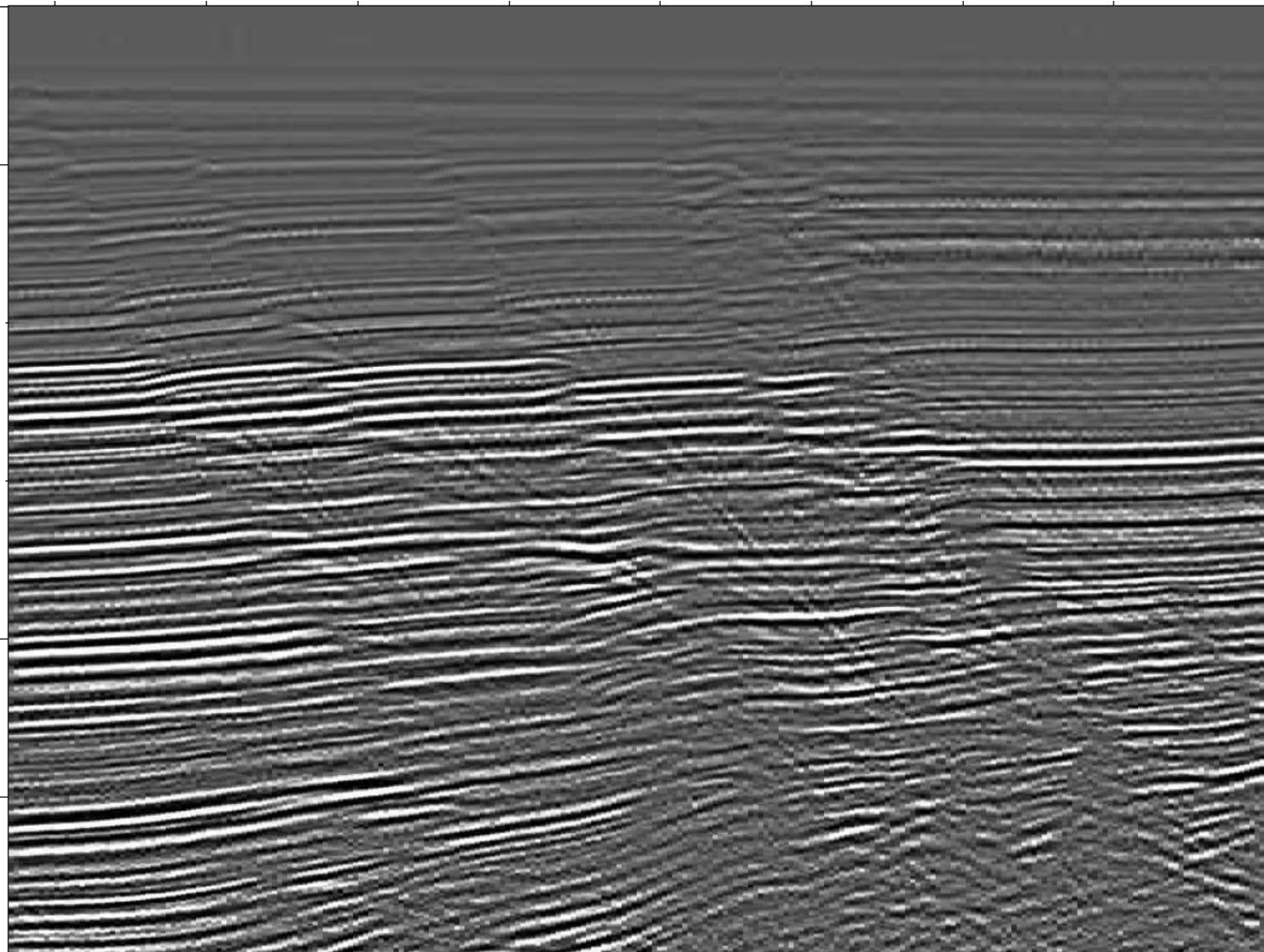
Society of Exploration Geophysicists  
*The international society of applied geophysics*

# Stacked section

Location



Time



*After Fomel, Landa and Taner, 2007*



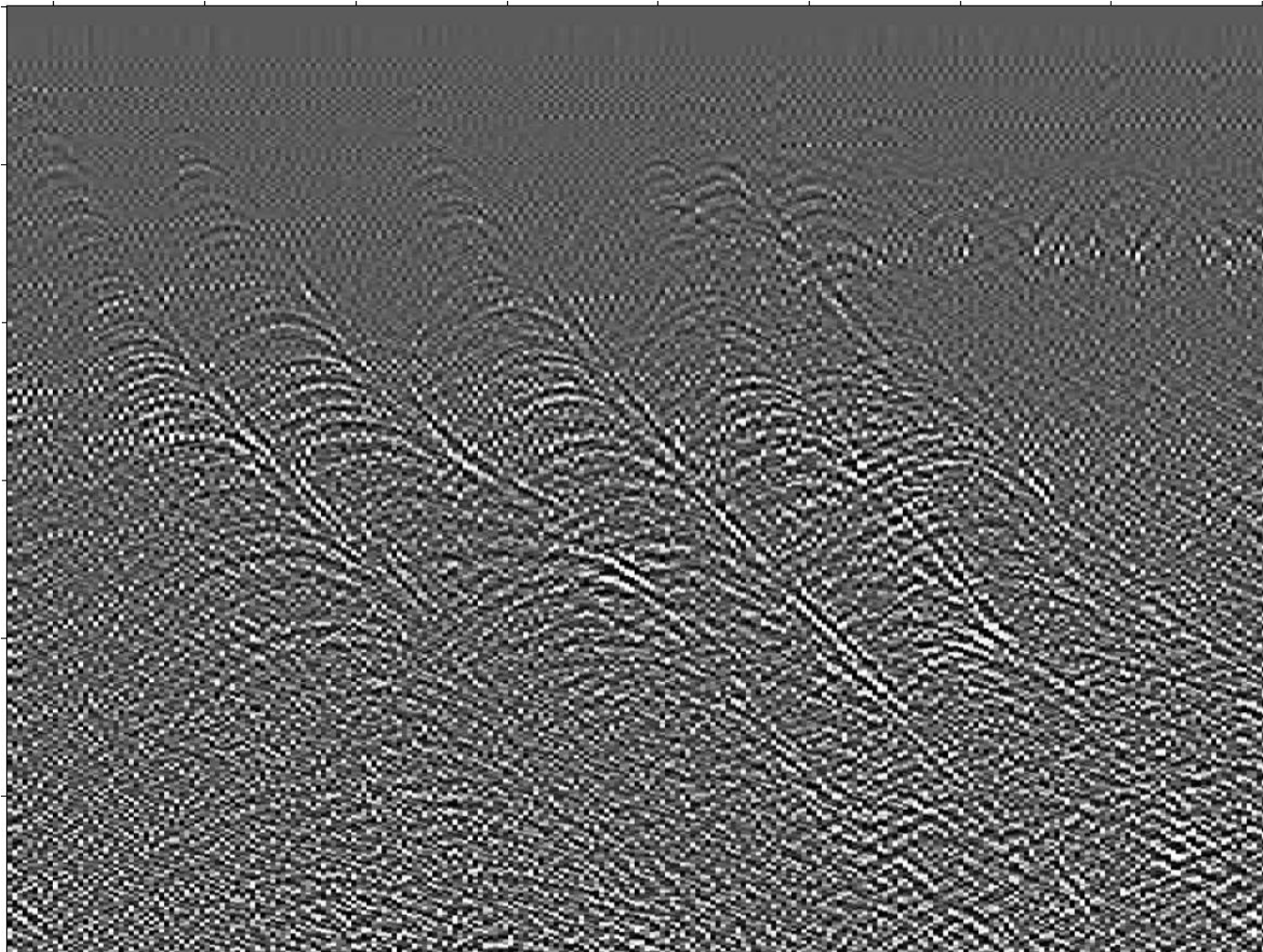
Society of Exploration Geophysicists  
*The international society of applied geophysics*

# Diffraction stack

## Location



**Time**



*After Fomel, Landa and Taner, 2007*



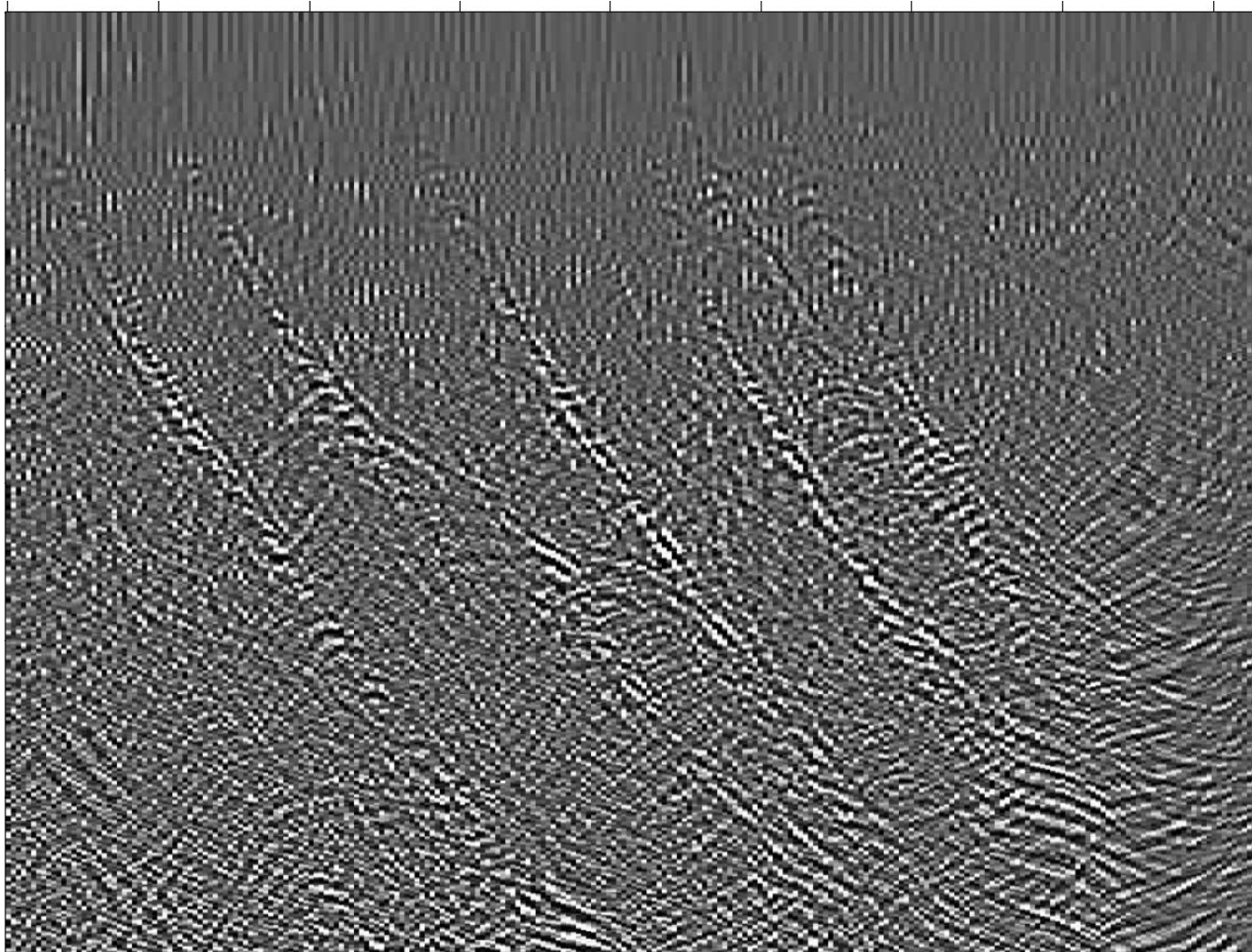
# Migrated diffraction stack



Society of Exploration Geophysicists  
*The international society of applied geophysics*

**Location**

**Time**



*After Fomel, Landa and Taner, 2007*



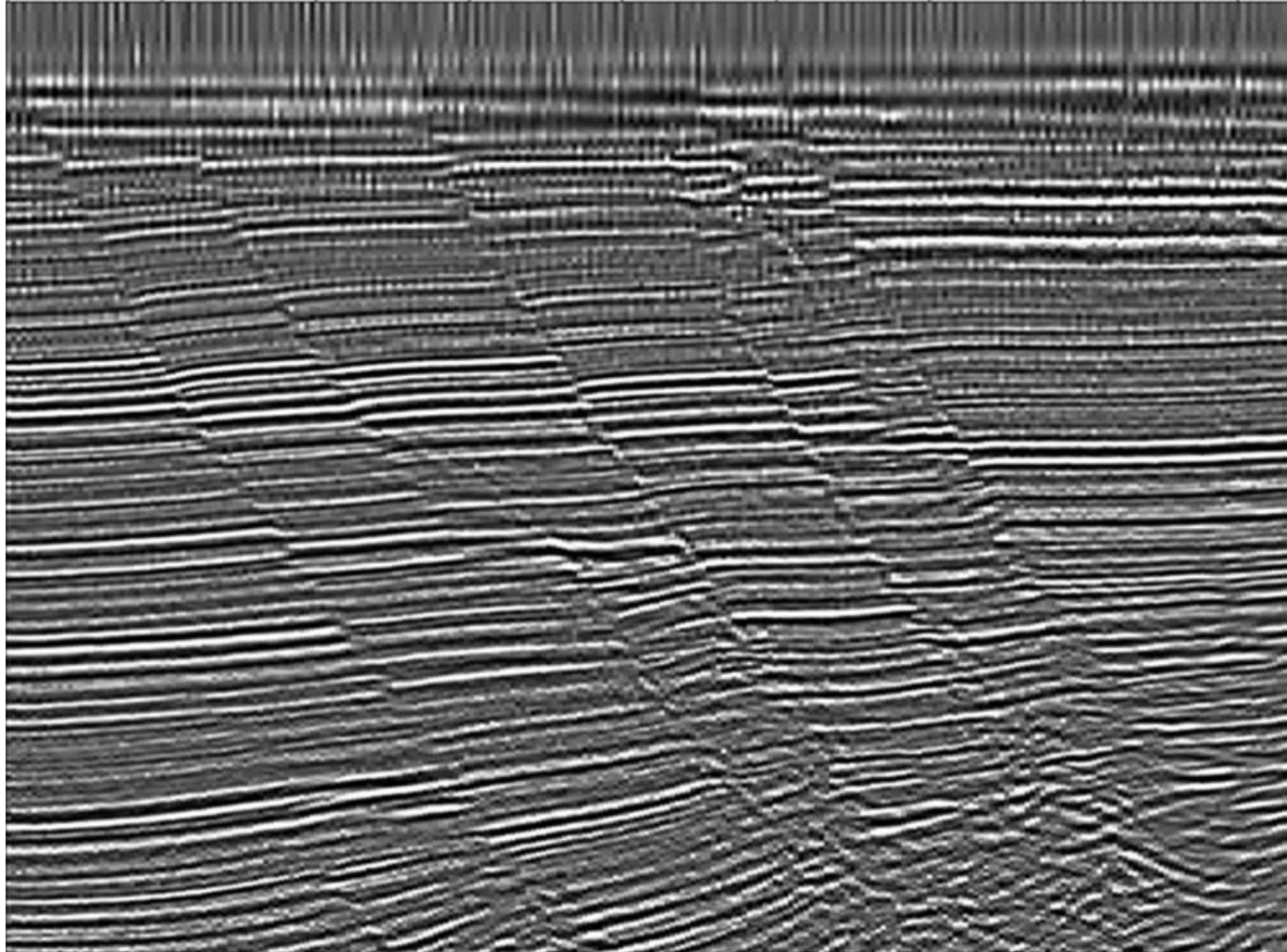
# Migrated full stack



Society of Exploration Geophysicists  
*The international society of applied geophysics*

## Location

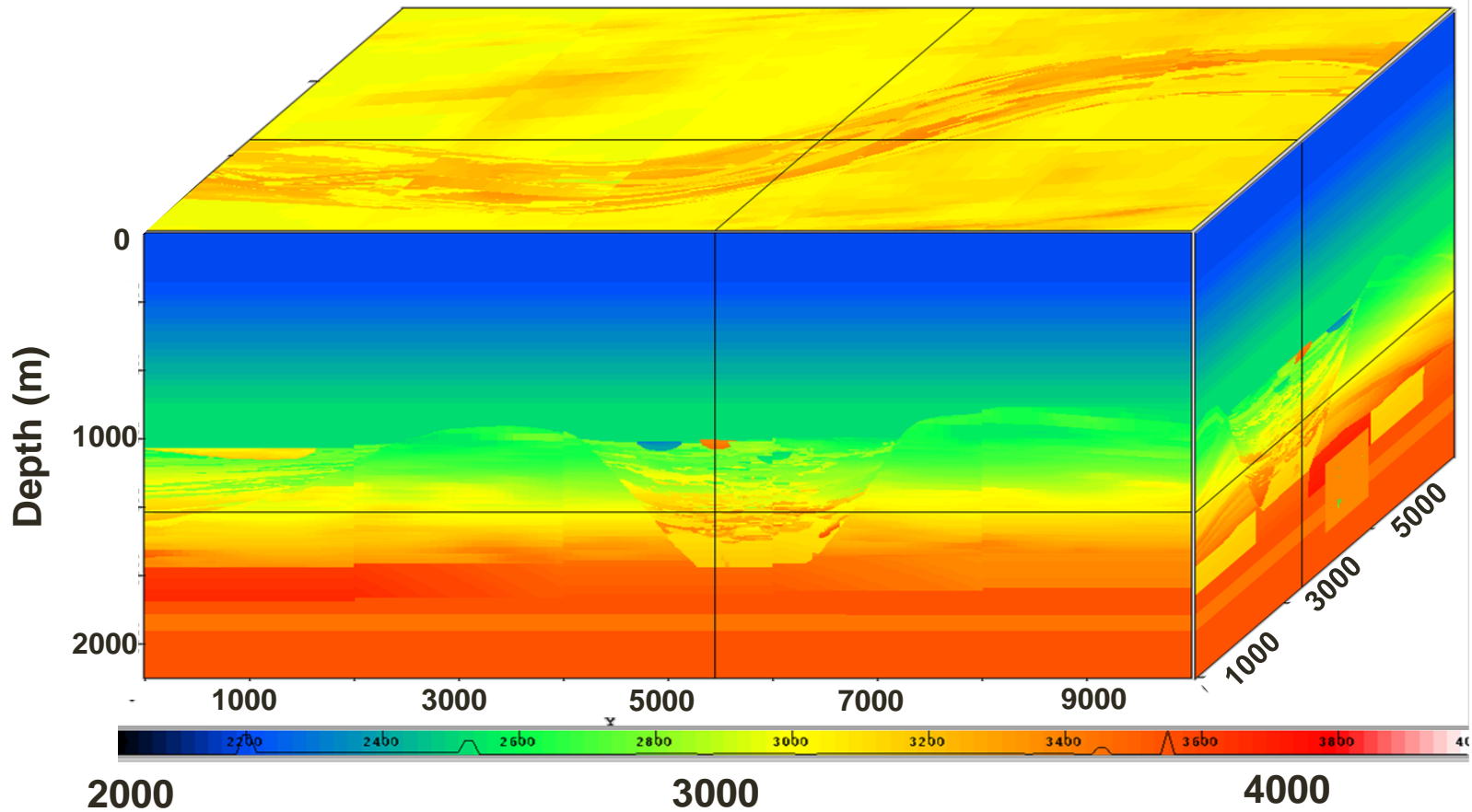
**Time**



*After Fomel, Landa and Taner, 2007*



# Velocity model

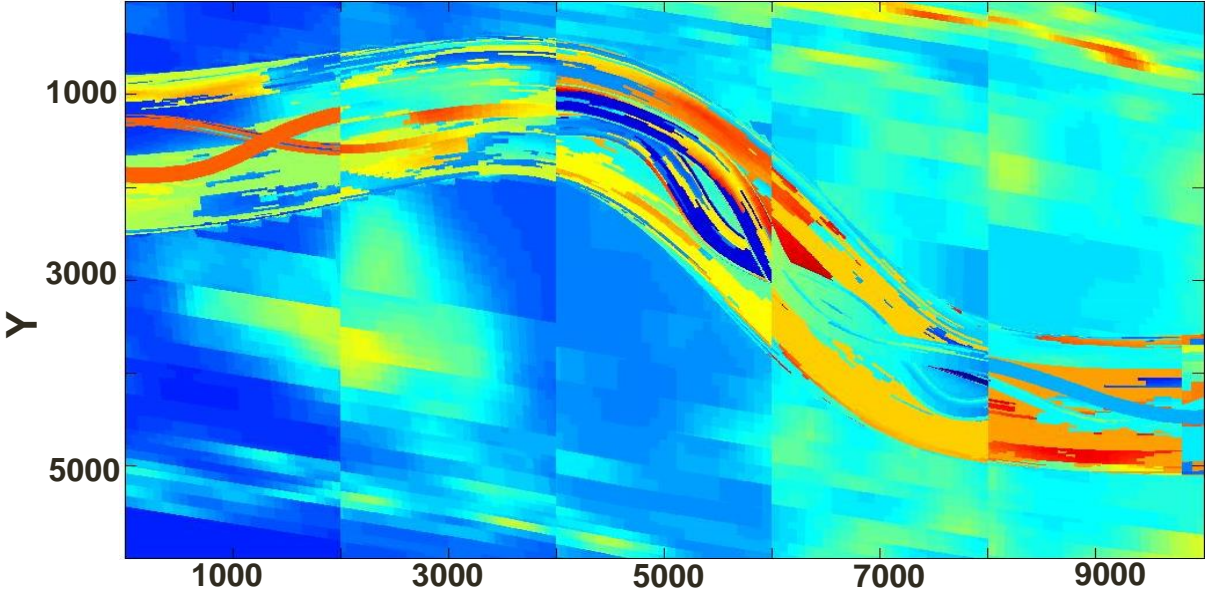




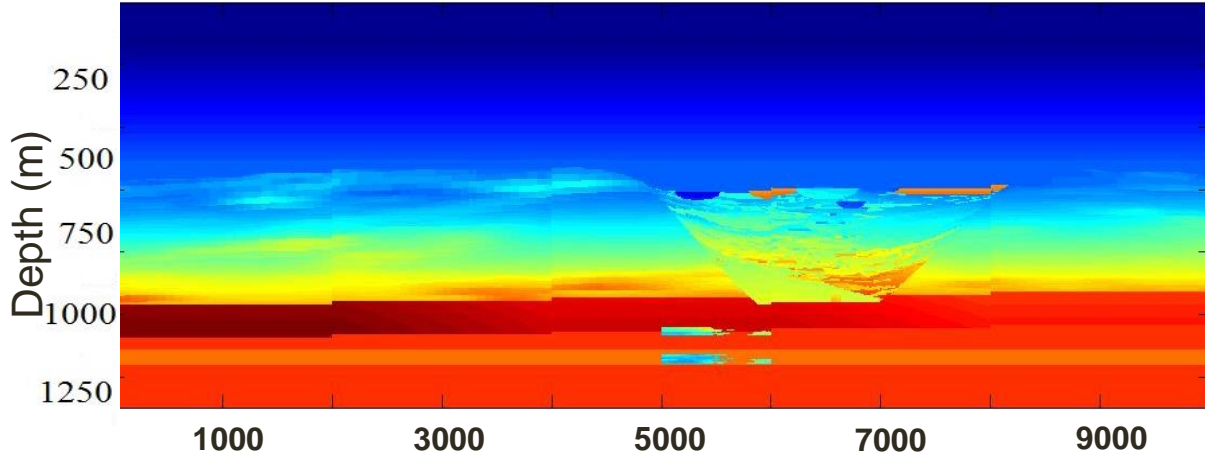
# Velocity model



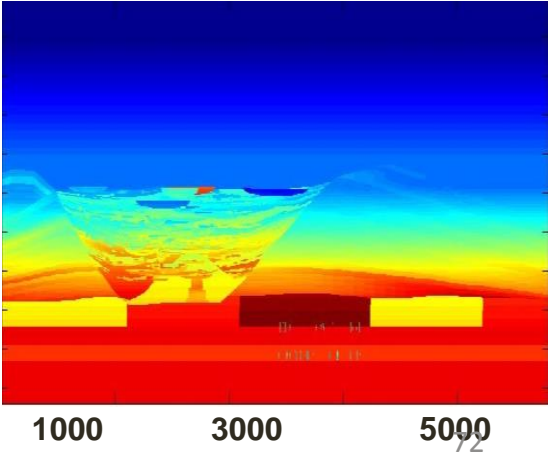
X



X



Y



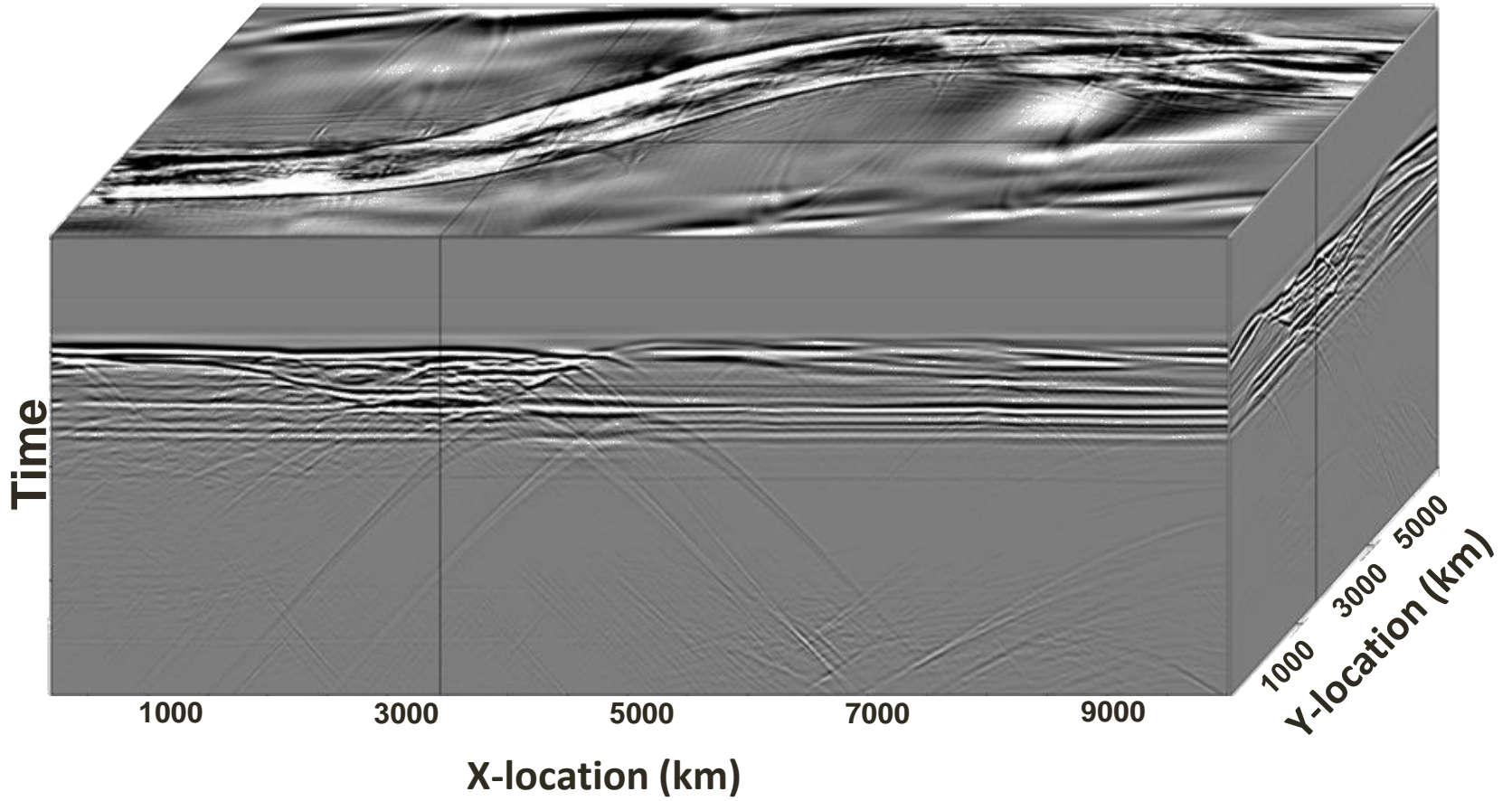




# Zero-offset cube (channel time slice)



Society of Exploration Geophysicists  
*The international society of applied geophysics*

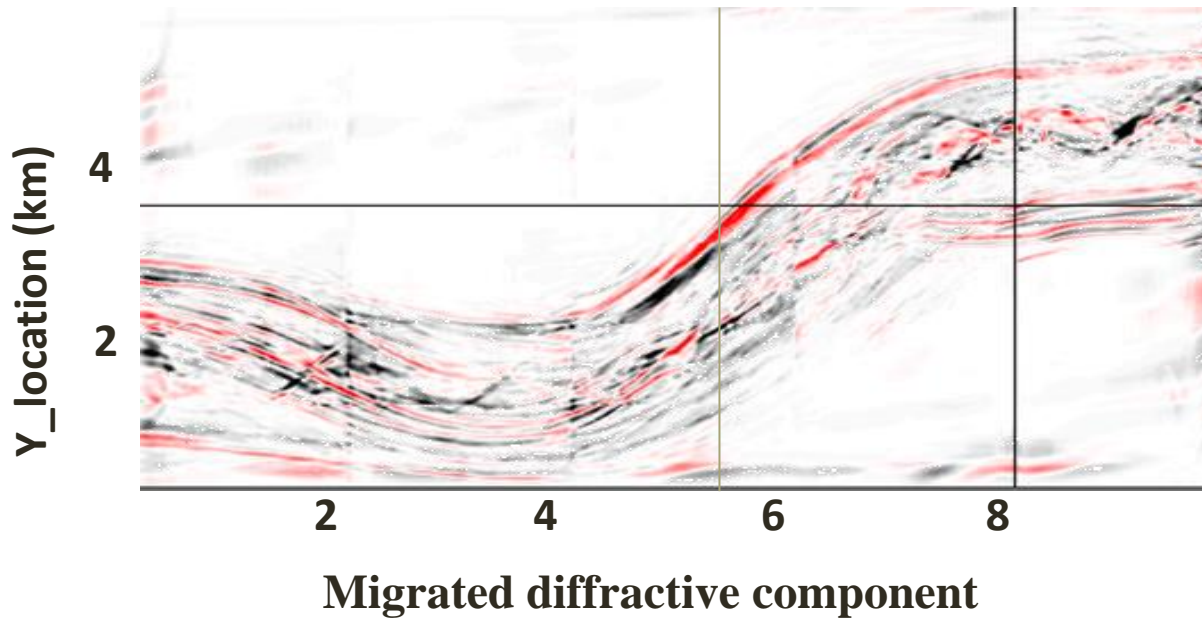
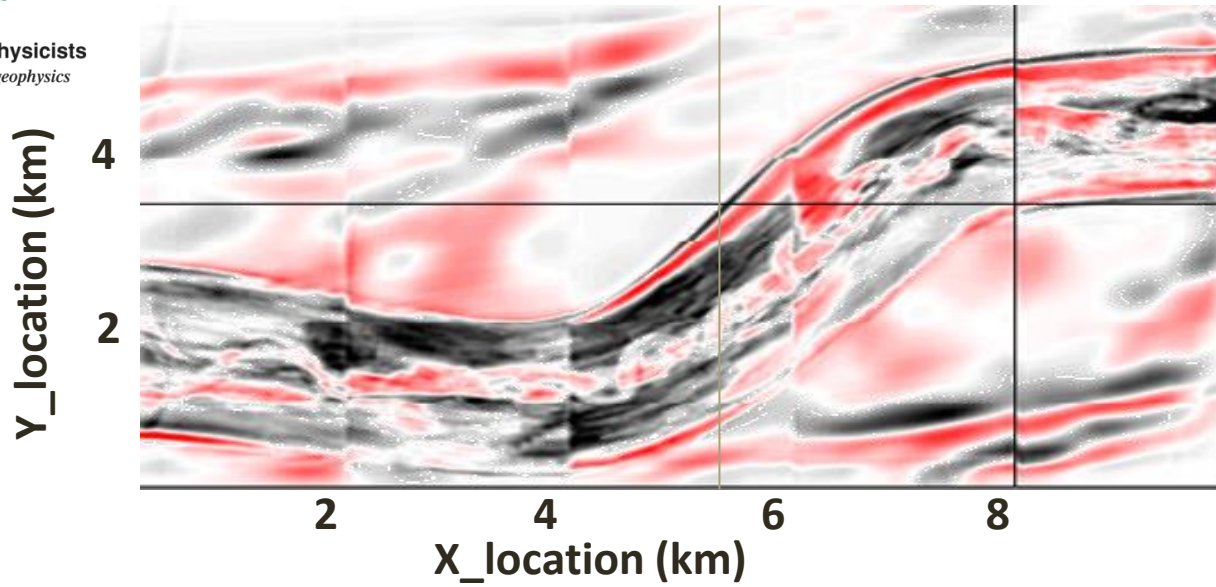




Society of Exploration Geophysicists  
The international society of applied geophysics

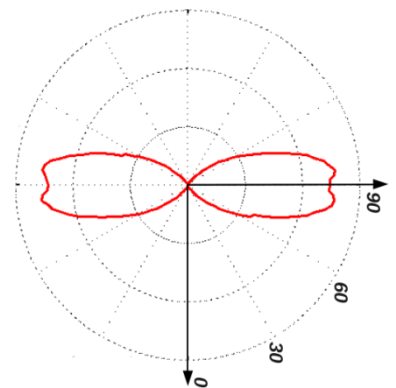
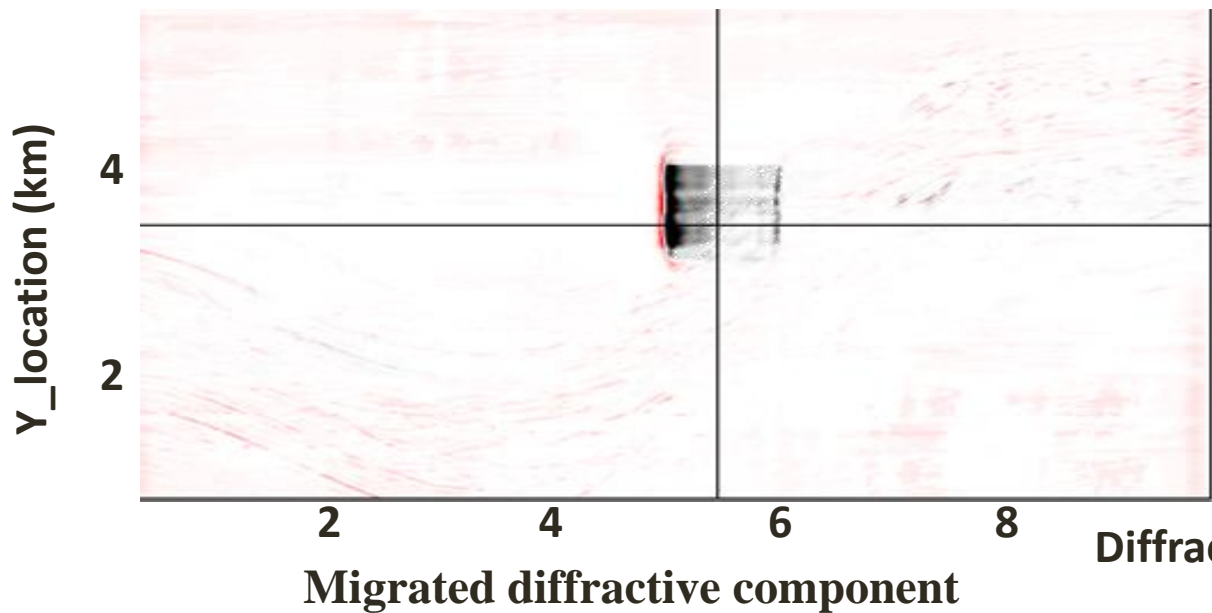
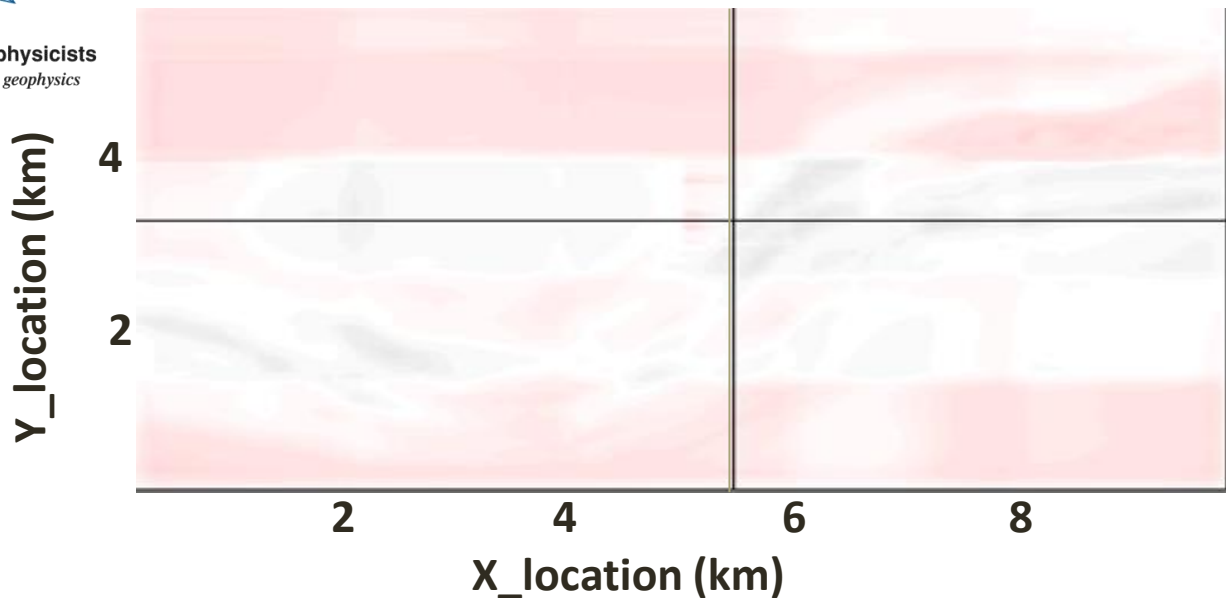


## Migrated full field





# Migrated full field





Society of Exploration Geophysicists  
*The international society of applied geophysics*

# Summary



- Traditional seismic processing and imaging tends to highlight reflectors and obscure non-reflecting elements, such as small faults, edges, fractures and small scattering objects
- Diffraction is direct indicator of small and medium scale subsurface elements
- Diffraction imaging method allows us finding objects less than seismic wavelength



Society of Exploration Geophysicists  
The international society of applied geophysics



## *Is the future bright?...*

### *Can we overcome the non-uniqueness, instability and uncertainty in our solutions?*

- How far the geophysical inverse problem can be formalized?
- The gap between a solution as obtained for very refined mathematical assumptions and reality can be very large
- Does the level of mathematics really define the maturity of a science?
- Overcoming uncertainties...

*“I can live with doubt and uncertainty and not knowing. I think it is much more interesting to live not knowing than to have answers that might be wrong”*

*Richard Feynman*



horizon